

**GIS TECHNICAL INPUTS FOR THE EASTERN AFRICA  
COASTAL FORESTS**

**CONSULTANCY: REF.9F0735.01**

**Report: August 2002**

*Harrison O. Ong'anda*  
*(GIS Consultant)*

## TABLE OF CONTENTS

**INTRODUCTION** **1**

**GIS DATASETS** **2**

**GIS MAPS** **3**

**CONCLUSION** **3**

### **FIGURES**

- Figure 1 Index map
- Figure 2 Regional map showing distribution of coastal forests
- Figure 3-5 Kenya maps of coastal forests
- Figure 6-9 Tanzania maps of coastal forests
- Figure 10-13 Mozambique maps of coastal forests
- Figure 14 Forests polygons, Mozambique
- Figure 15-17 Population density, Kenya, Tanzania, Mozambique

### **TABLES**

- Table 1: List of Kenya coastal forests
- Table 2: List of Tanzania coastal forests
- Table 3: List of Mozambique coastal forests

## 1. INTRODUCTION

The eastern African coastal forests form part of the moist coasts flora and fauna considered as important centers of endemism. The coastal forests are distributed over six countries (Somalia, Kenya, Tanzania, Mozambique, Zimbabwe and Malawi), covering an area of approximately 3160 km<sup>2</sup>. It is reported that the coastal forests have decreased in area from 100,000 km<sup>2</sup> in the early 90's to the current figure. This figure is however deemed inaccurate.

The coastal forests are fragmented and small, and are surrounded by poor communities that have a high demand for land and forest resources. These forests are known to support the cultural and traditional practices of the local population. Other characteristics include; richness in biodiversity with a high level of endemism and are important water catchment areas.

Site-specific conservation work has been carried out by WWF in various places over time. However the need to have a common vision for these forests necessitated the regional planning approach. One of the inputs in this process is availability of baseline survey data of various forms and, maps.

The objective the GIS technical input was therefore to assist in providing such data in map form that may help syntheses of status and threats of the coastal forests in Kenya, Tanzania and Mozambique whereby such maps show features and events such as population, roads, forest areas etc as relating these forests. This information provided in digital and hard copy forms would therefore be made available to various planning groups and in reports for visualization and records.

The GIS database is in PC Arc/Info compatible formats and ArcView version 3.2 shape files.

## **2. GIS DATASETS**

### **2.1. Forests**

Respective country focal groups provided table of forest locations giving point positions of respective patches. These positions were plotted and GIS maps produced during the Regional Planning workshop held in Nairobi in February 2002 (see figure 1 – 13).

Subsequent National Workshops for Kenya, Tanzania and Mozambique revised the list of forests adding more details where possible (see table 1,2 and 3). The minimum forest area for Tanzania and Kenya is 900 km<sup>2</sup> and 800 km<sup>2</sup> respectively.

Data obtained from the Mozambique national workshop participants using the forest/vegetation maps have now been digitized. Thus the Mozambique estimated forest polygons are now available (Fig. 14) with total area of 50,000 km<sup>2</sup>.

### **2.2 Infrastructure**

One of the most important influence of exploitation of forests products include availability of nearby settlements as well as accessibility through road networks

Road network and population centers (major towns, urban centers etc) are shown all over the areas of interest. Distinctions on road network such tarmac, murrum and dry weather further assists in planning for management.

### **2.3 Protected areas**

All the protected areas are available as polygons in GIS form showing parks, reserves or sanctuaries. These polygons give an indication of already existing opportunities for conservation. Tanzania has declared 5 coastal forests as Protected Areas over the past 10 years and 39 Kaya forests have also been gazetted and protected as National Monuments in Kenya over the same period.

### **2.4 Drainage points**

Drainage points including rivers, lakes and swamps may have important linkage with a forest patch and is therefore an important factor for conservation. Data is provided for perennial and non-perennial rivers and lakes. More information showing swamps and marshes may be useful.

### **2.5 Biodiversity**

During the Regional planning meeting in Nairobi, participants estimated areas where there is high species endemism, and were subsequently digitized. These are presented as polygons in the GIS database.

## **2.6 Demography**

Population usually correlates positively with pressure on natural resources either through resource extraction or effluent loading. As already pointed above, poverty ridden human population often surrounds these forests. The planning process therefore may have to recognize various demographic statistics.

Population mapping is presented in GIS polygons with province as the mapping units for Tanzania and Mozambique (Fig 16,17), and for sub-locations for Kenya (Fig 15). Apart from the Kenya figures taken from the official National Census Survey 1999, the others are estimates.

A CD-ROM containing national census of 1997 was purchased from The Mozambique National Institute of Statistics. This is an improvement to the data used earlier from World Resources Institute. The map data in this CD contains among others the male and female population data up to post-administrative units and corresponding GIS maps. The software is however not compatible with Arc/View hindering immediate direct transformation.

Other GIS baseline data include elevation, coastline, sea, and provincial boundaries.

## **3. GIS MAPS**

Several maps of A1 (see Fig 1-17) and A3 size were printed incorporating the information above. The maps in GIS format are available as image files to be used in non-GIS platforms for reports and multiple prints.

## **4. CONCLUSION**

It is expected that the national working groups would require various products from the above data sets as well as from new ones. This will improve analysis of situations thorough the use of well-illustrated maps, as well as good cartographic presentations.

The GIS database also provides analytical opportunity and should continue to be maintained for this purpose.

Continued update of the GIS database will create comparative data with time and therefore make certain aspects of monitoring changes easier. This is more especially with a regular **aerial survey** of the various forest units.

WWF - COASTAL FORESTS - INDEX MAP

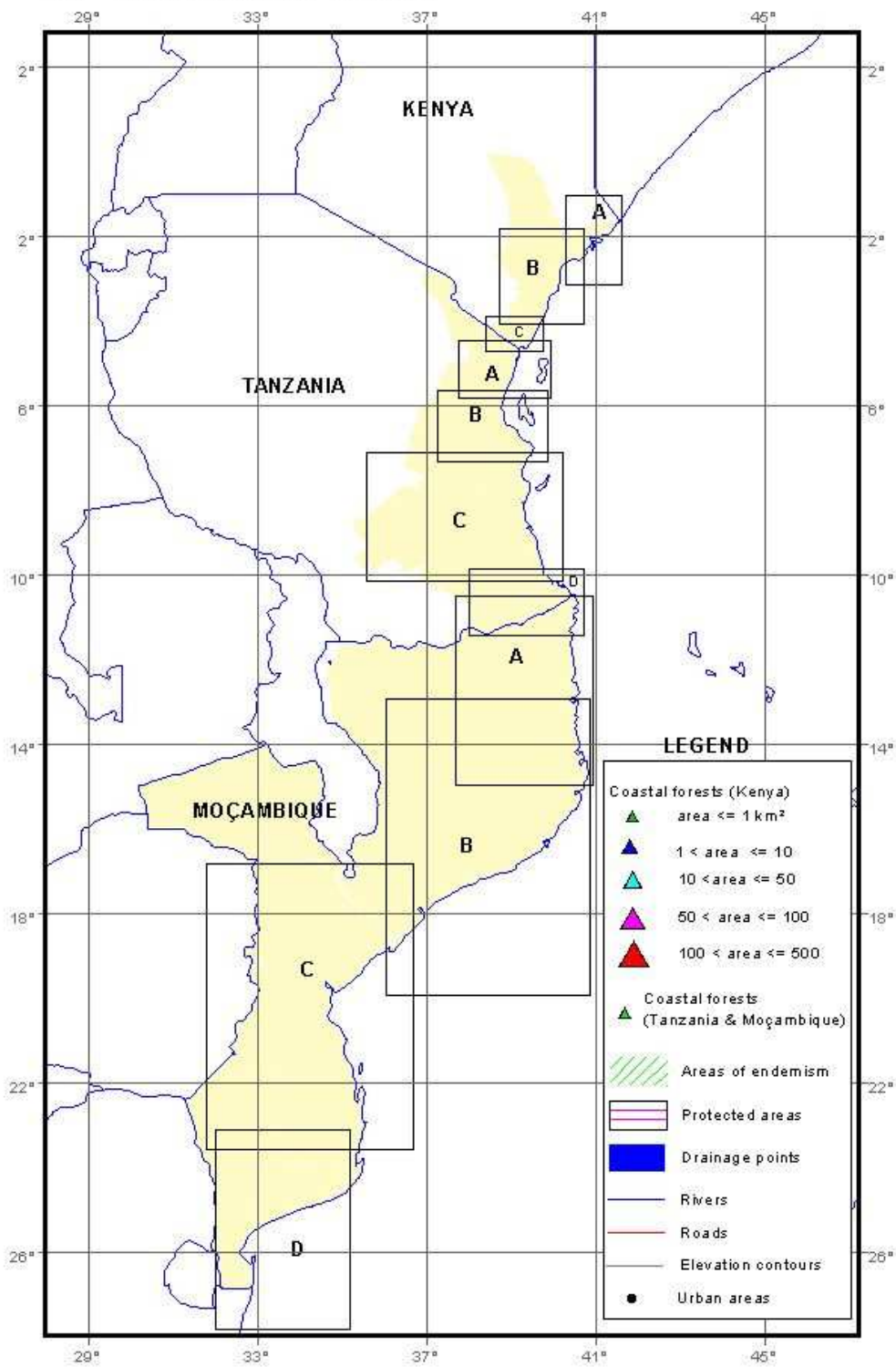


Fig 1: Map index for regional maps

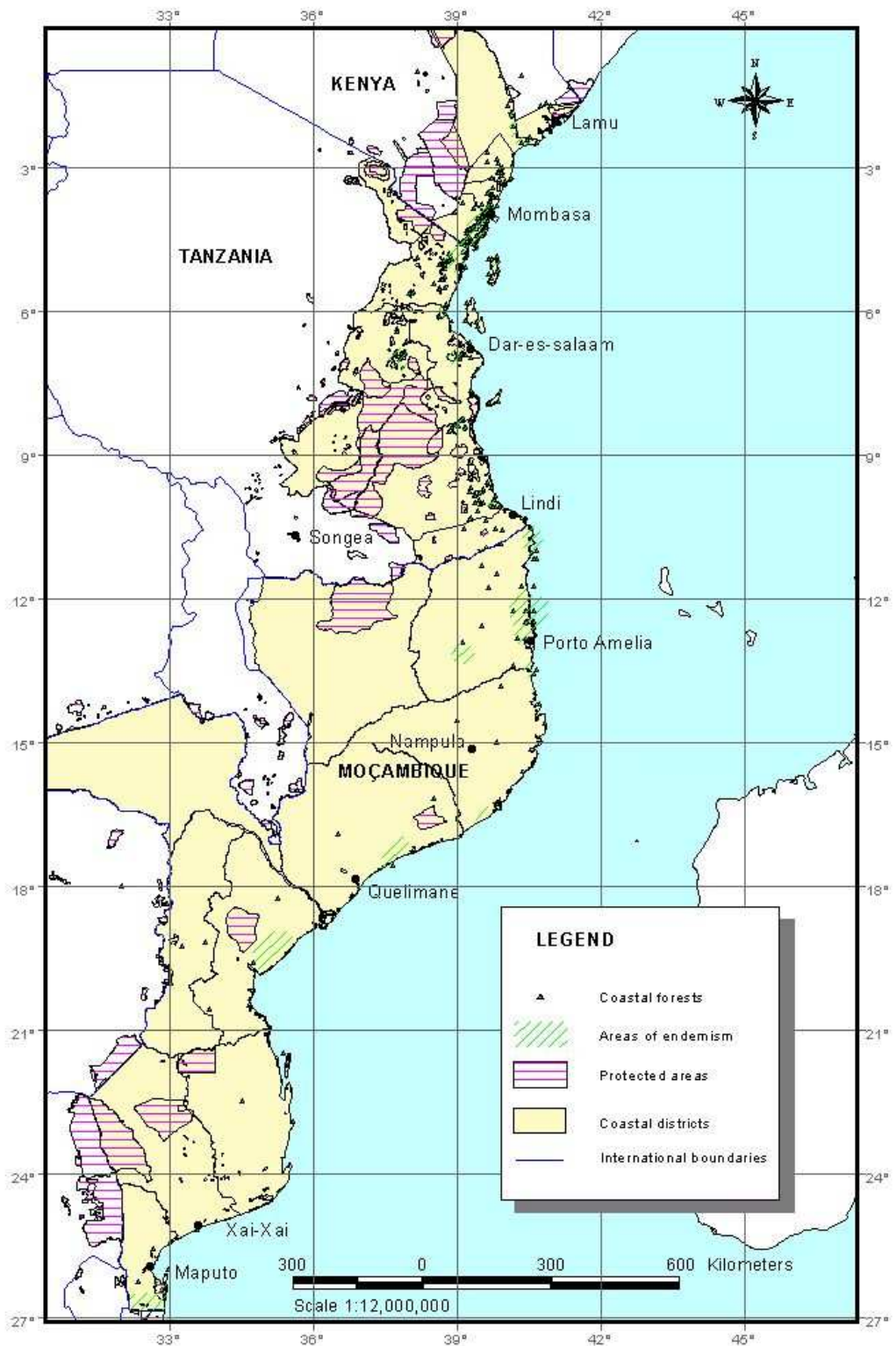


Fig 2. Eastern Africa Coastal Forests



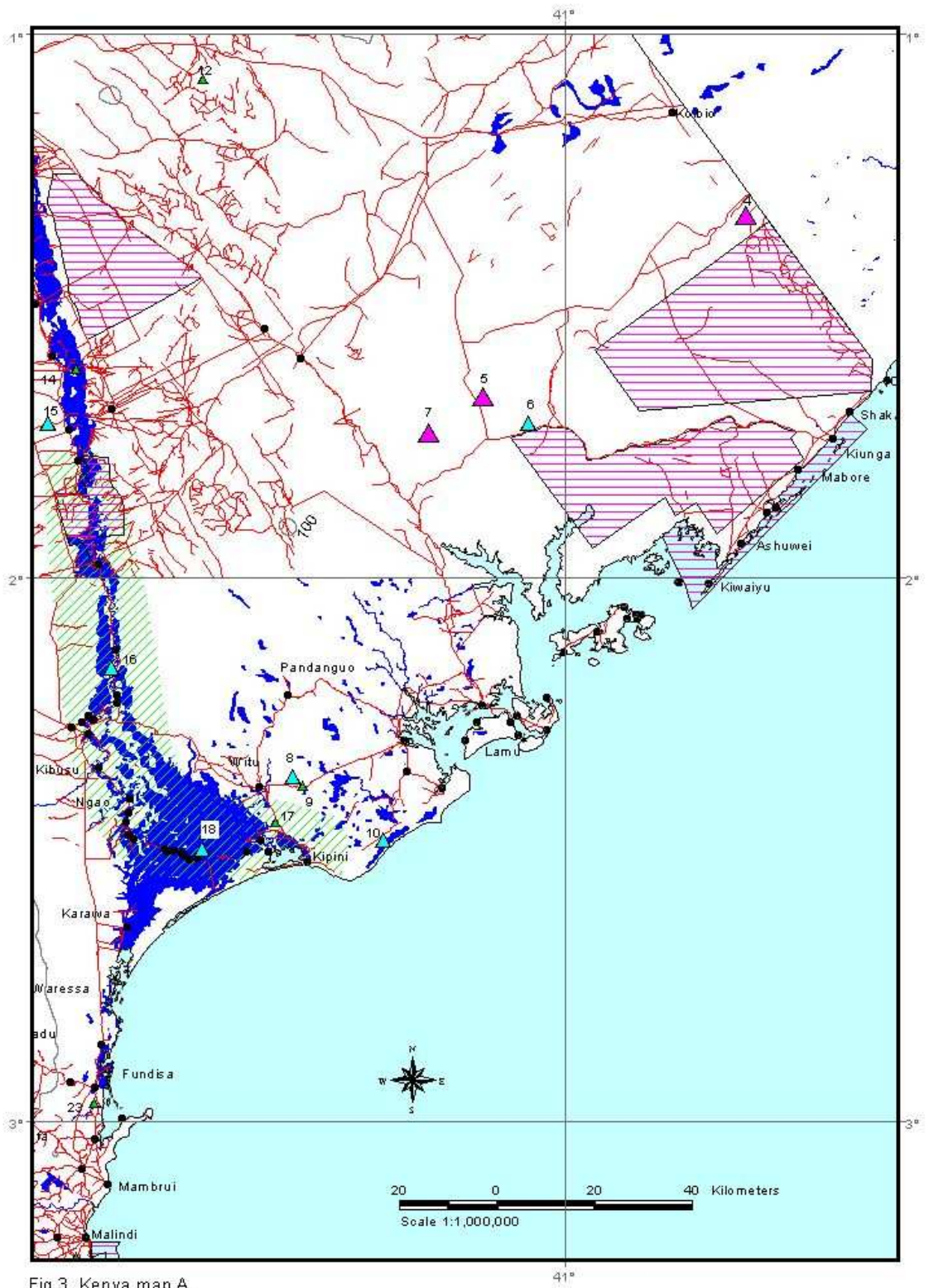


Fig 3. Kenya map A.



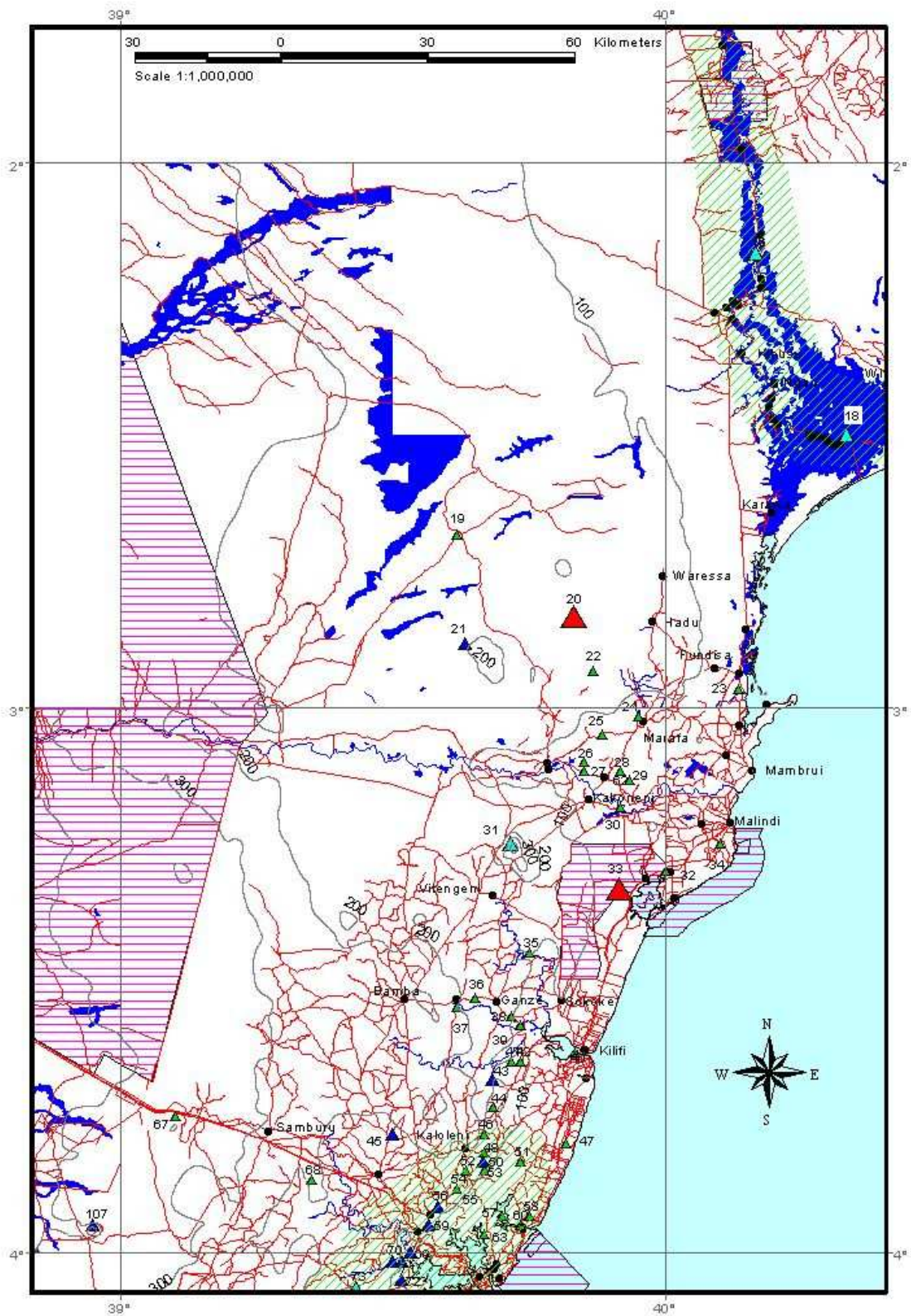


Fig 4. Kenya map B

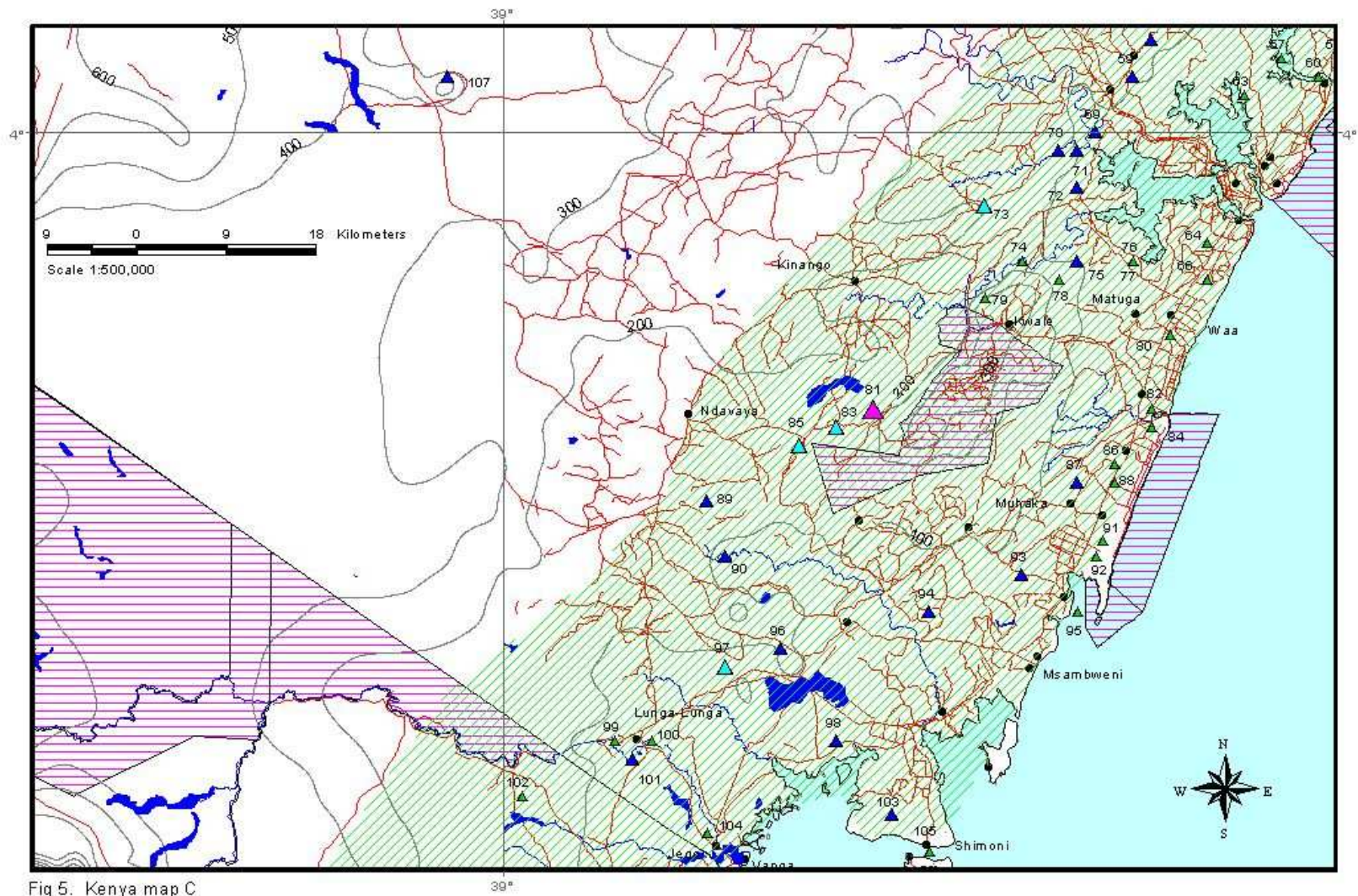


Fig 5. Kenya map C



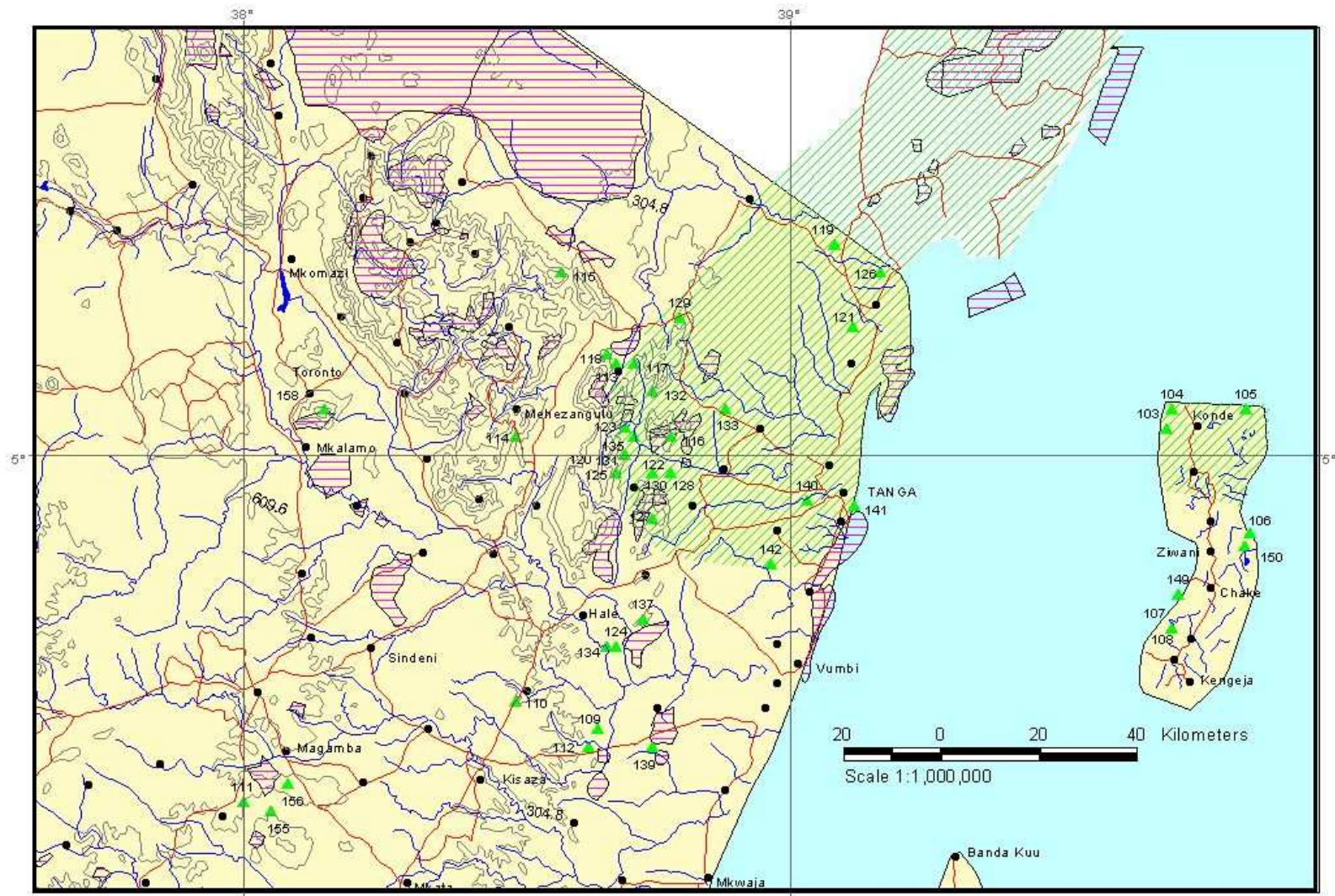


Fig 6. Tanzania map A. 38°



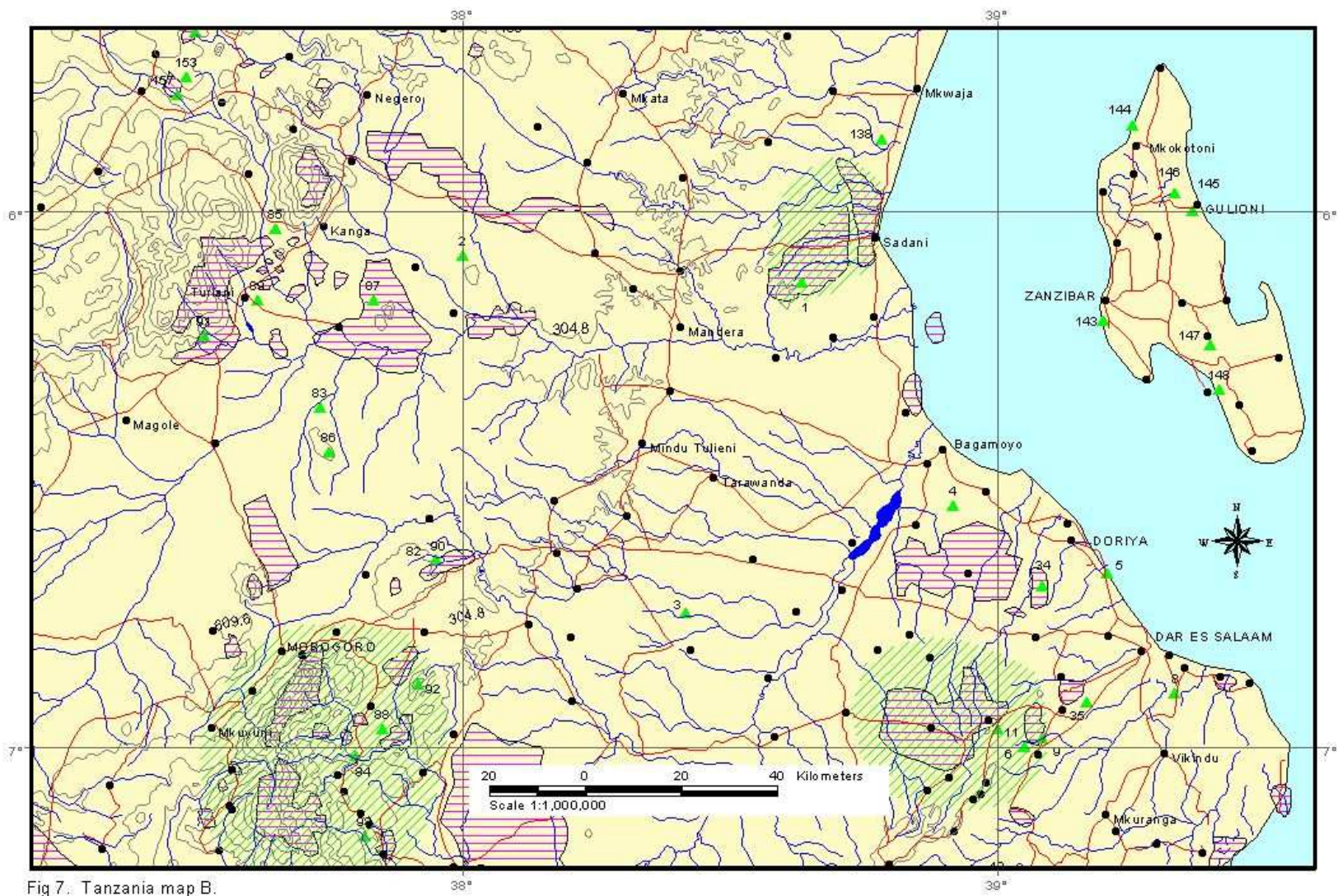


Fig 7: Tanzania map B.



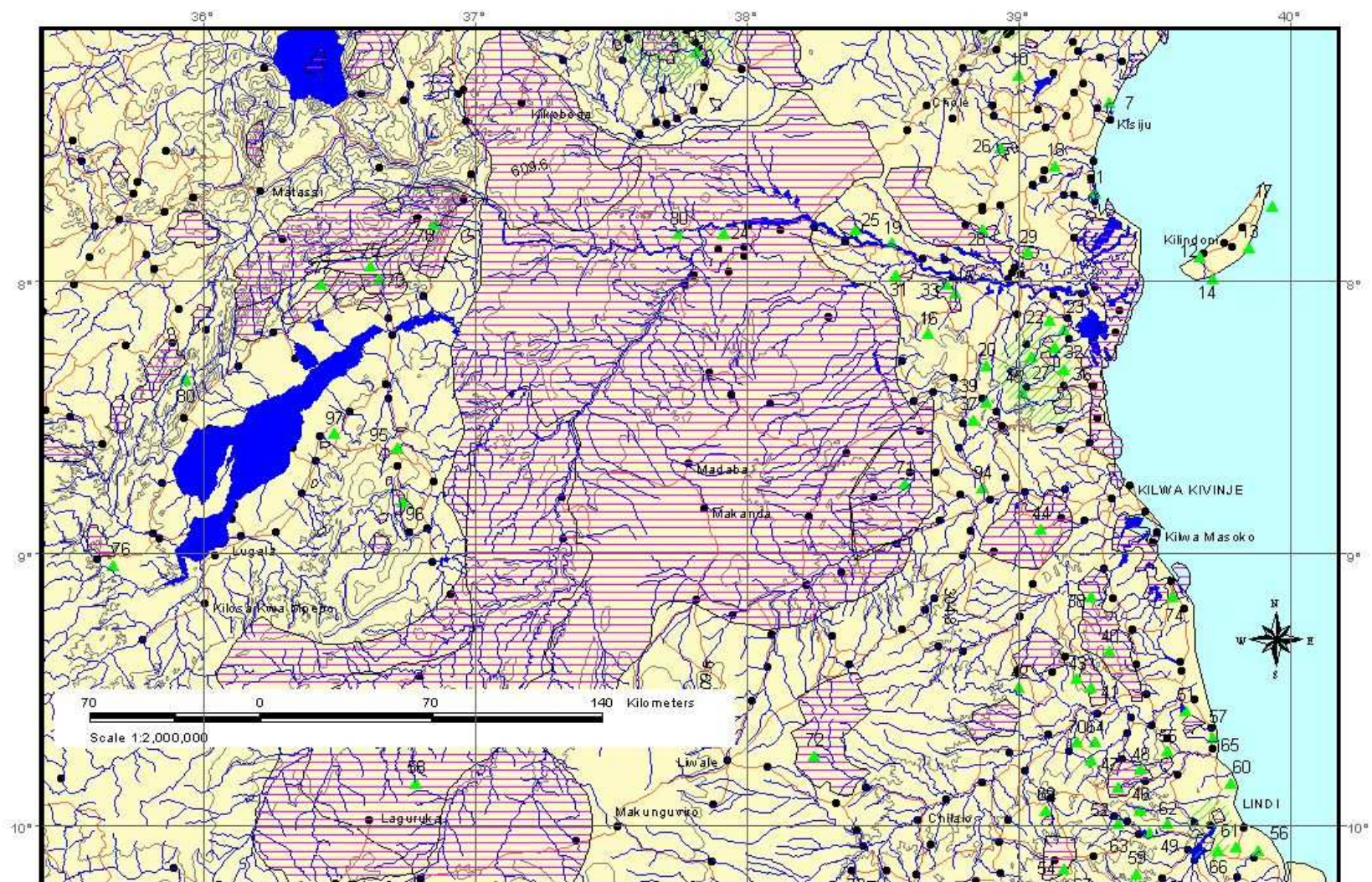


Fig 8. Tanzania map C.



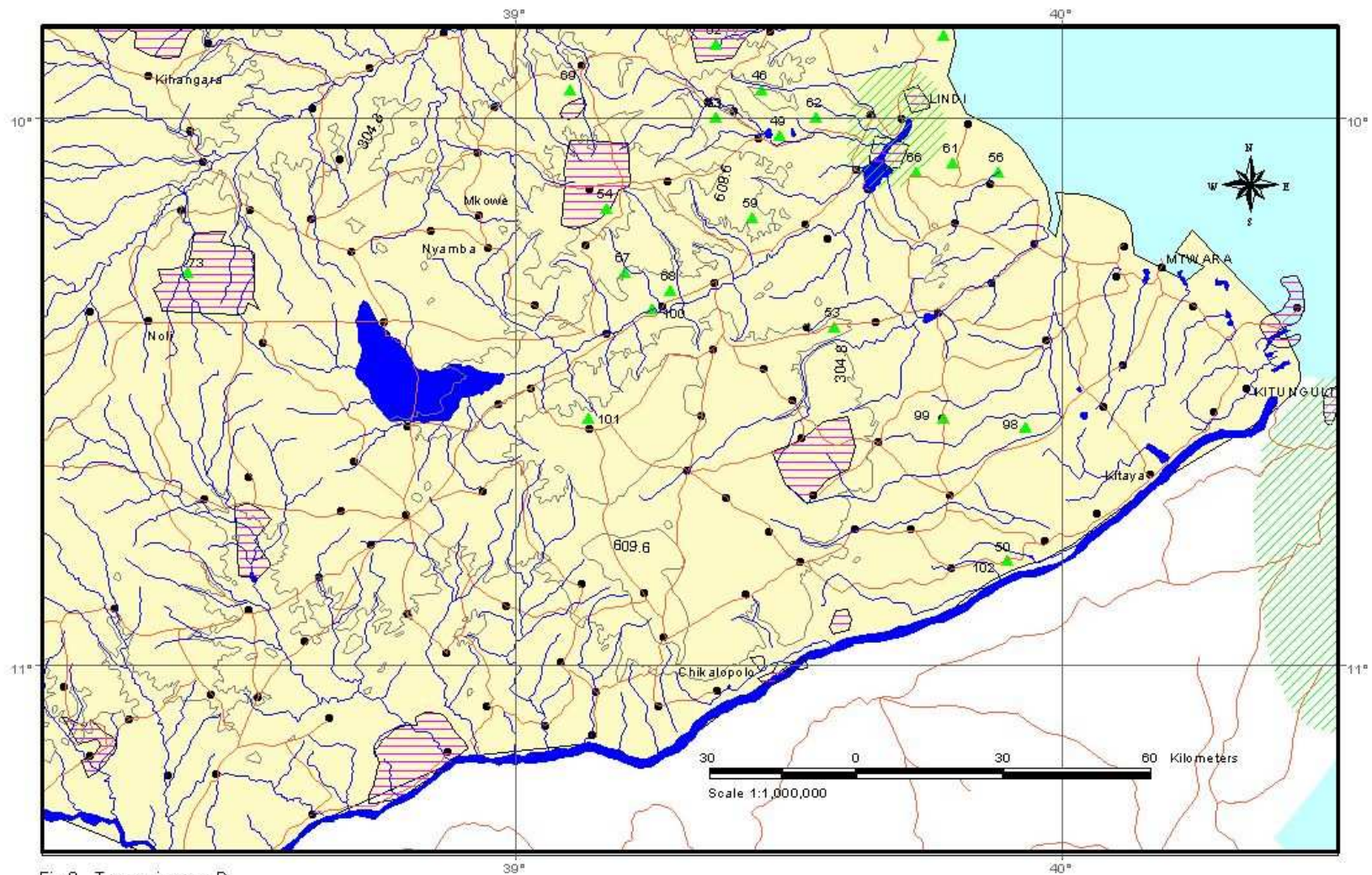


Fig 9. Tanzania map D.





Fig 10. Mozambique map A.



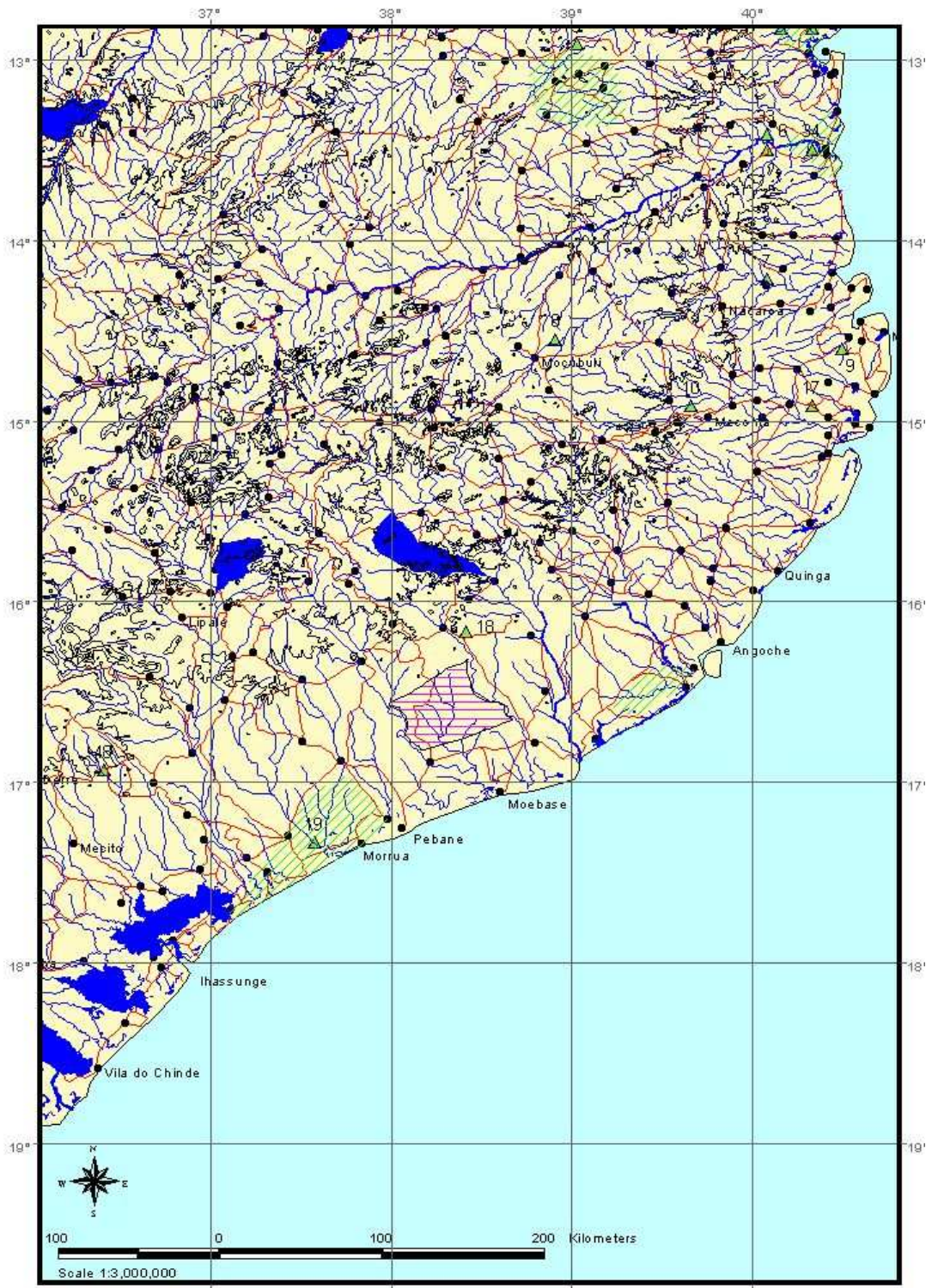


Fig 11. Mozambique map B



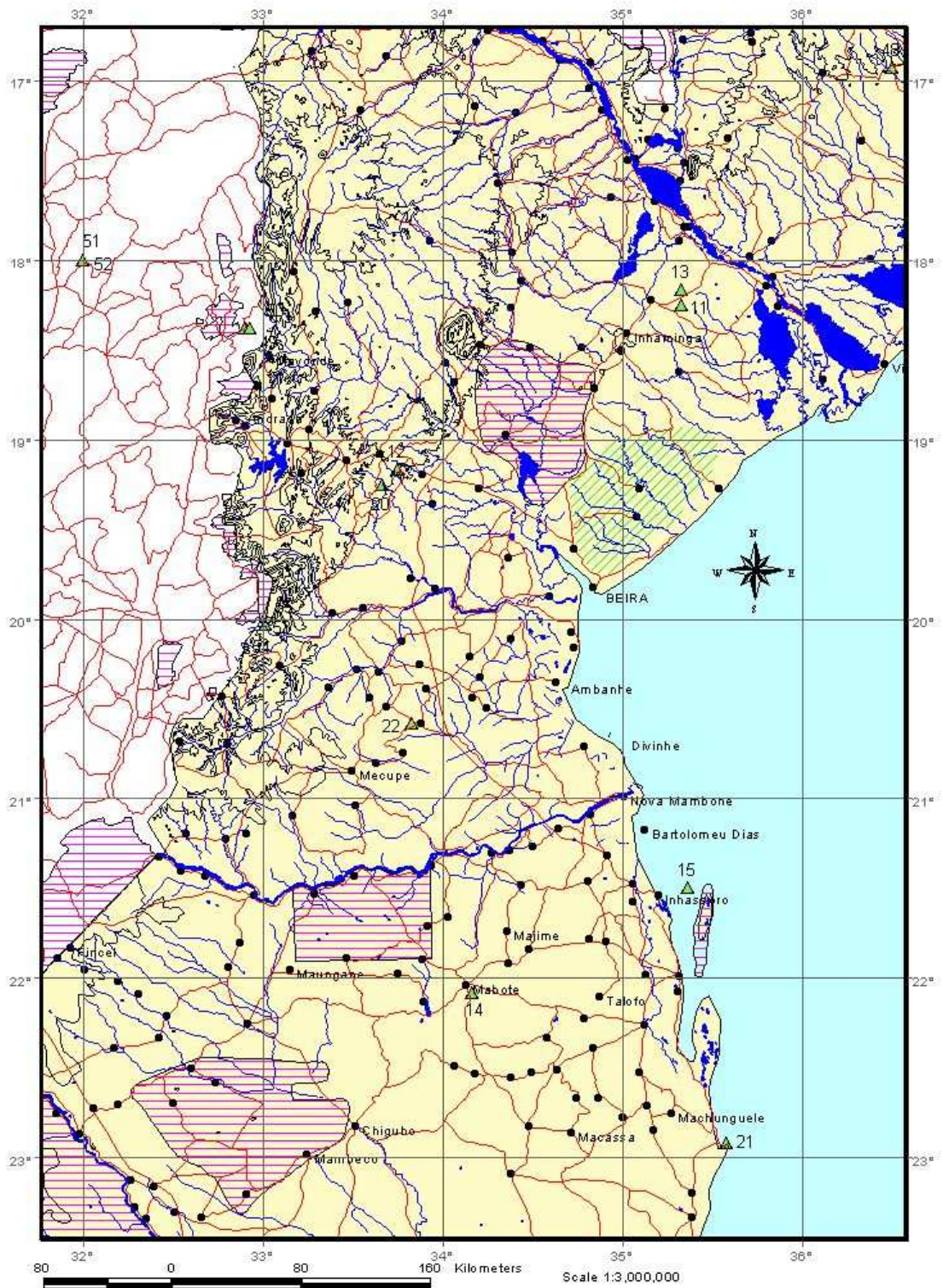


Fig 12. Mozambique map C.

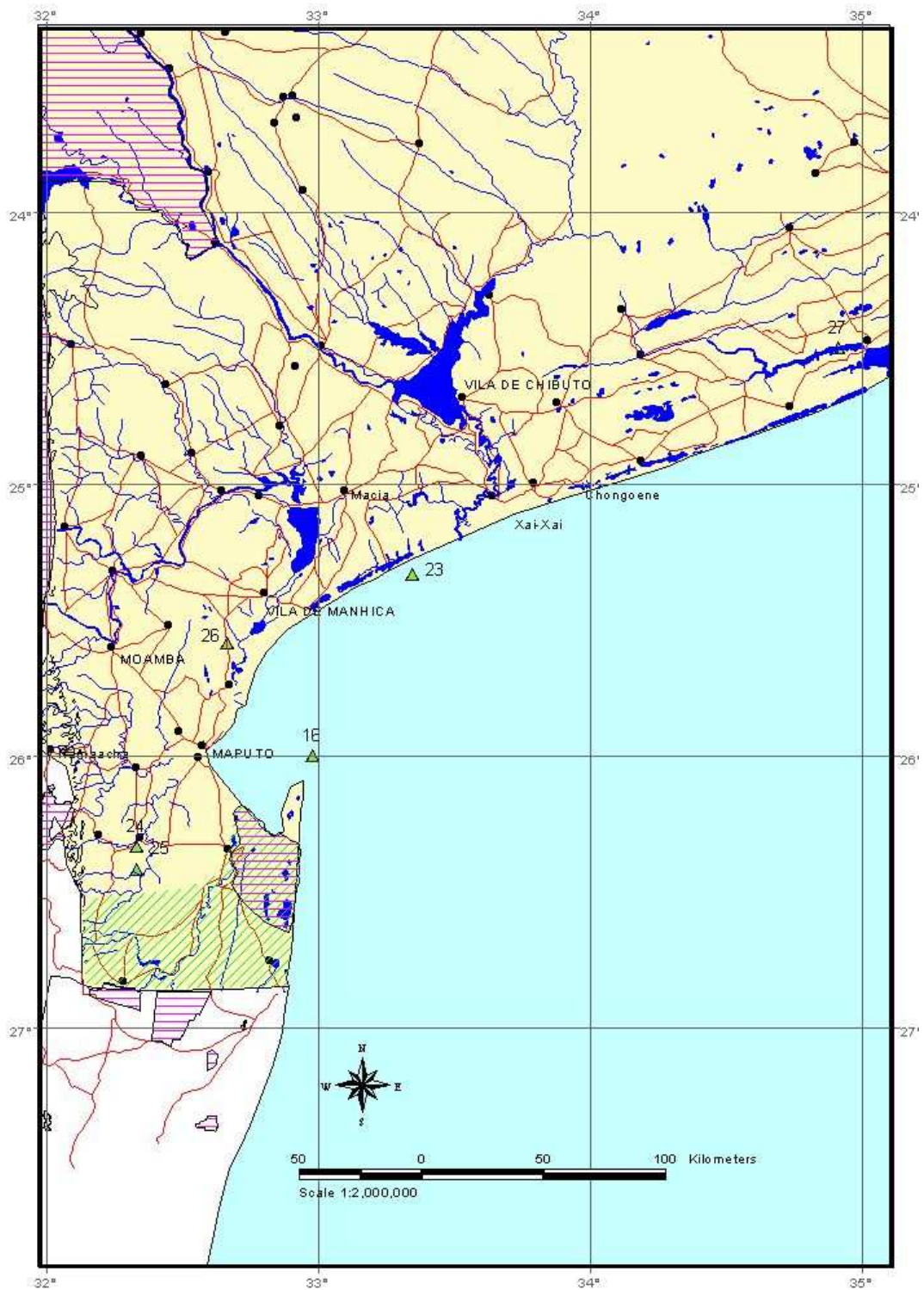


Fig 13. Mozambique map D.



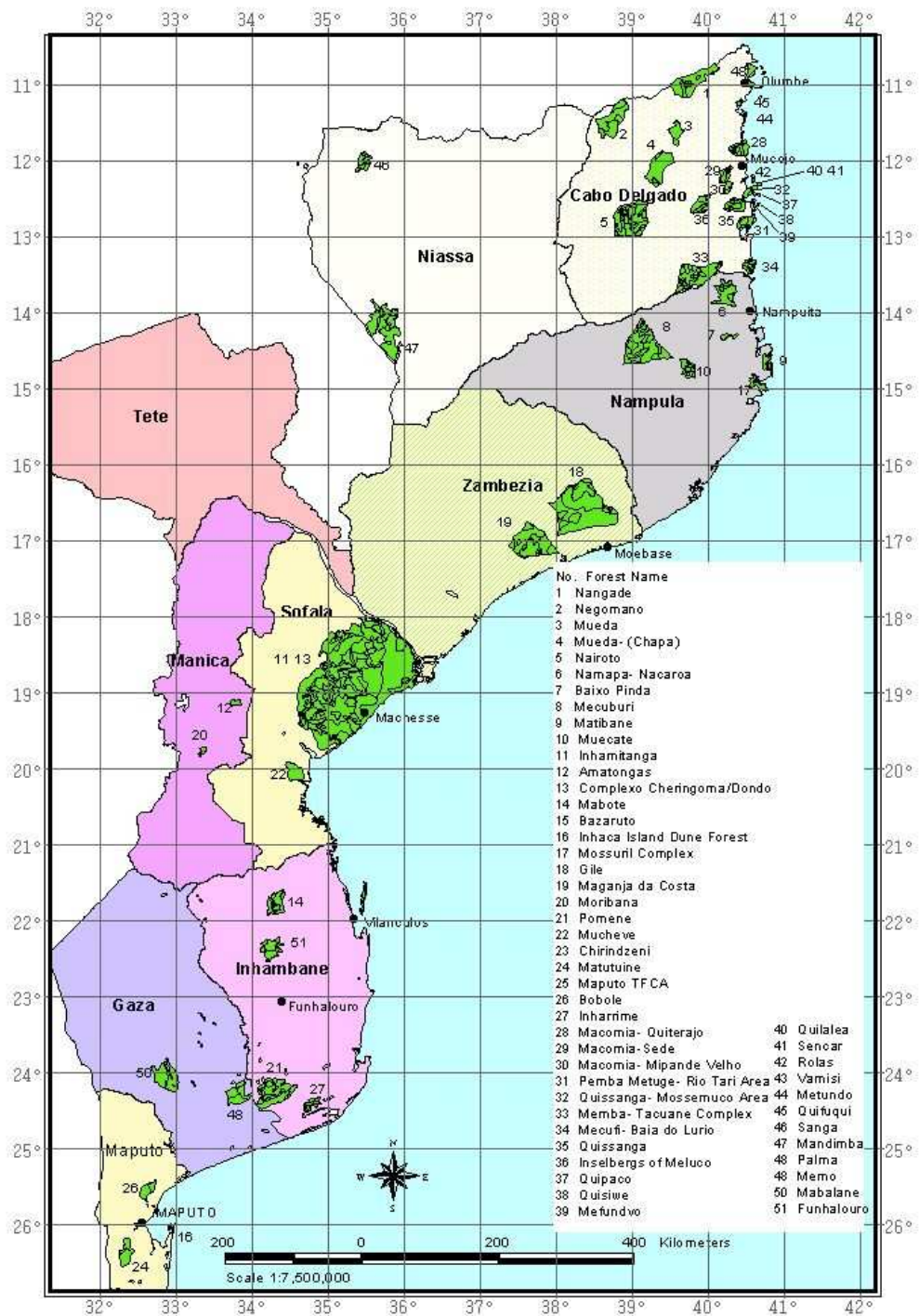


Fig 14. Coastal forests distribution - MOZAMBIQUE

By Harrison Ong'anda, Aug 2002

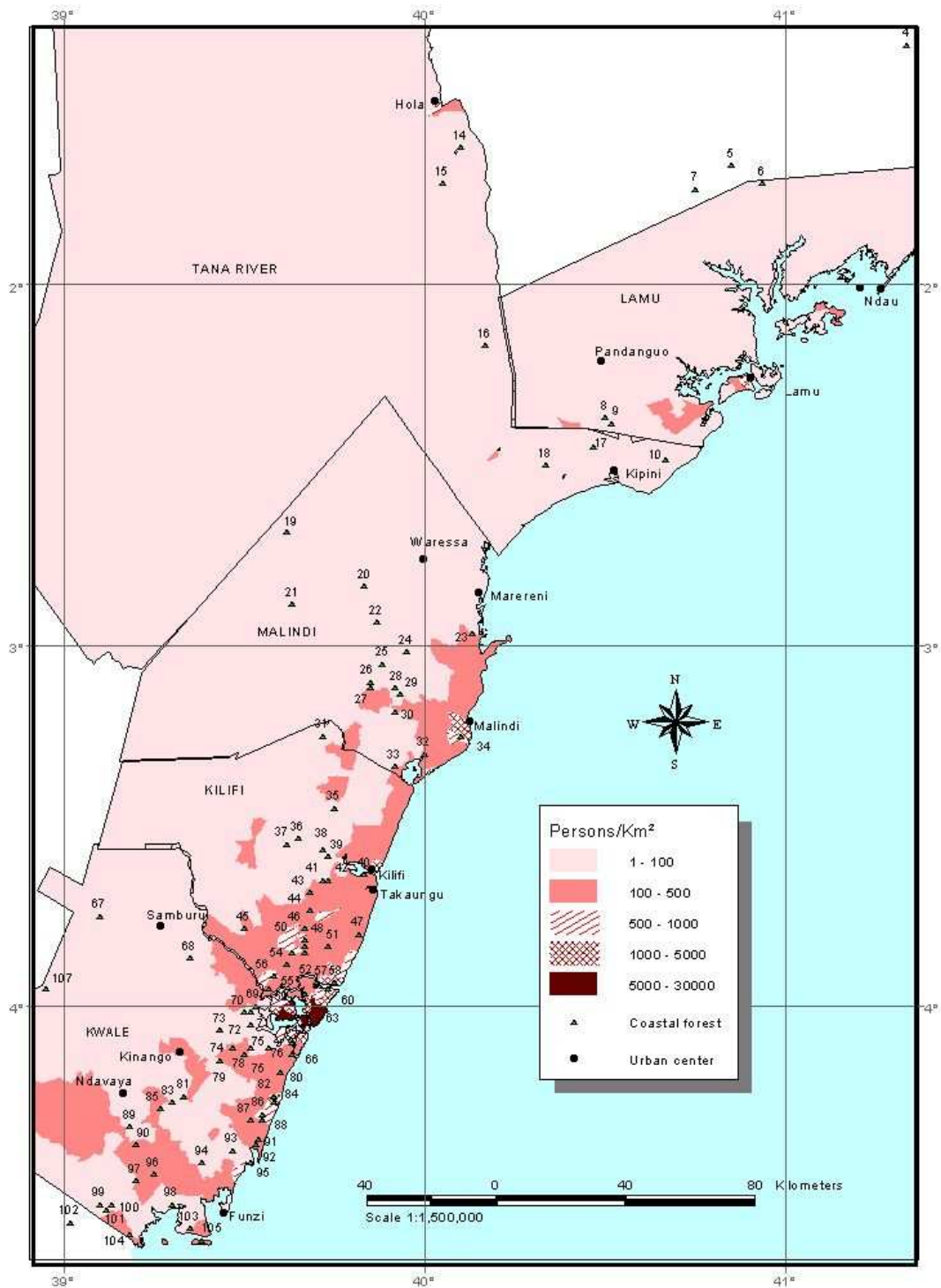


Fig 15. Population distribution - Kenya National Population Census, 1999.

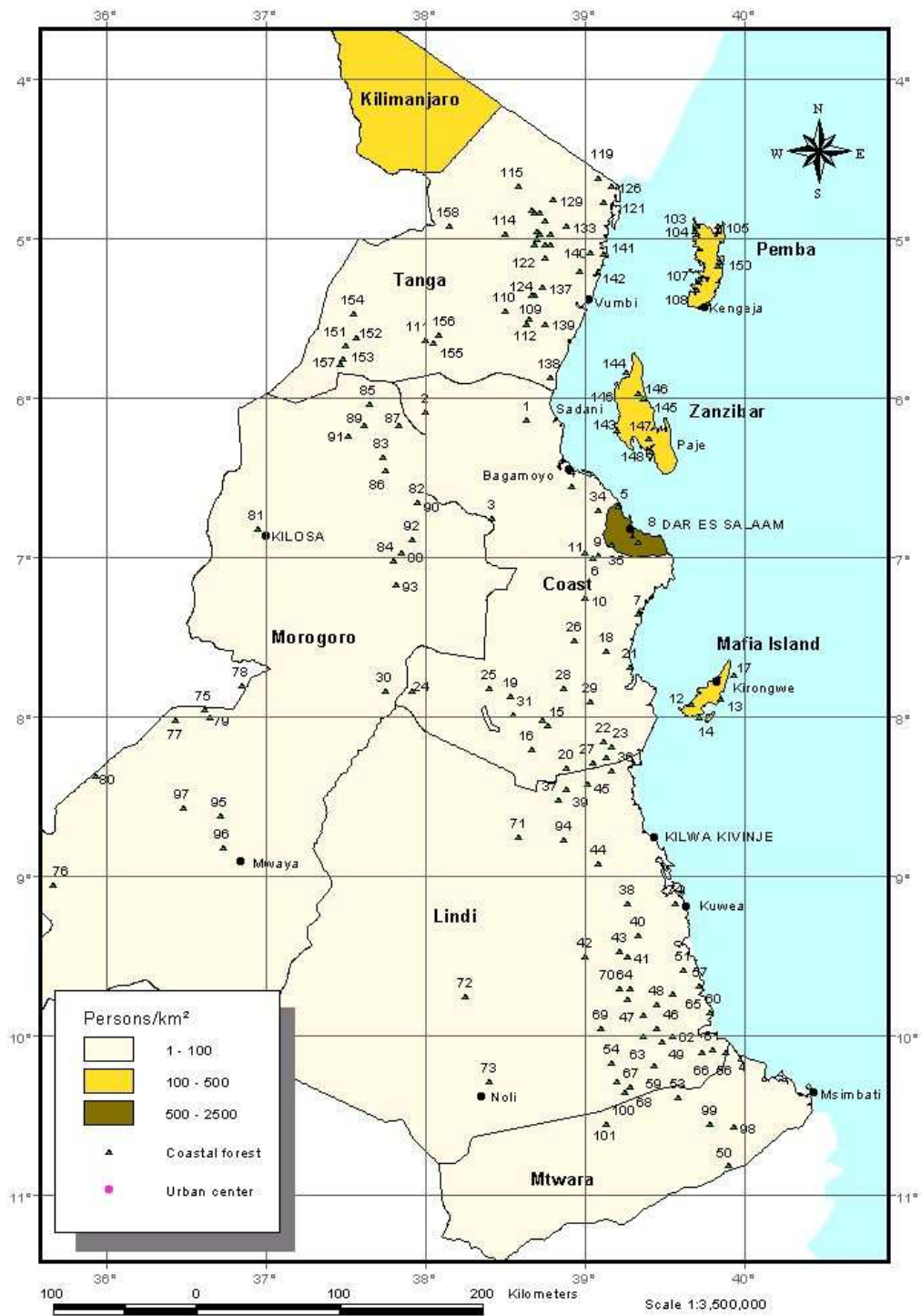


Fig 16. Population distribution in Tanzania - 1994 Estimate.

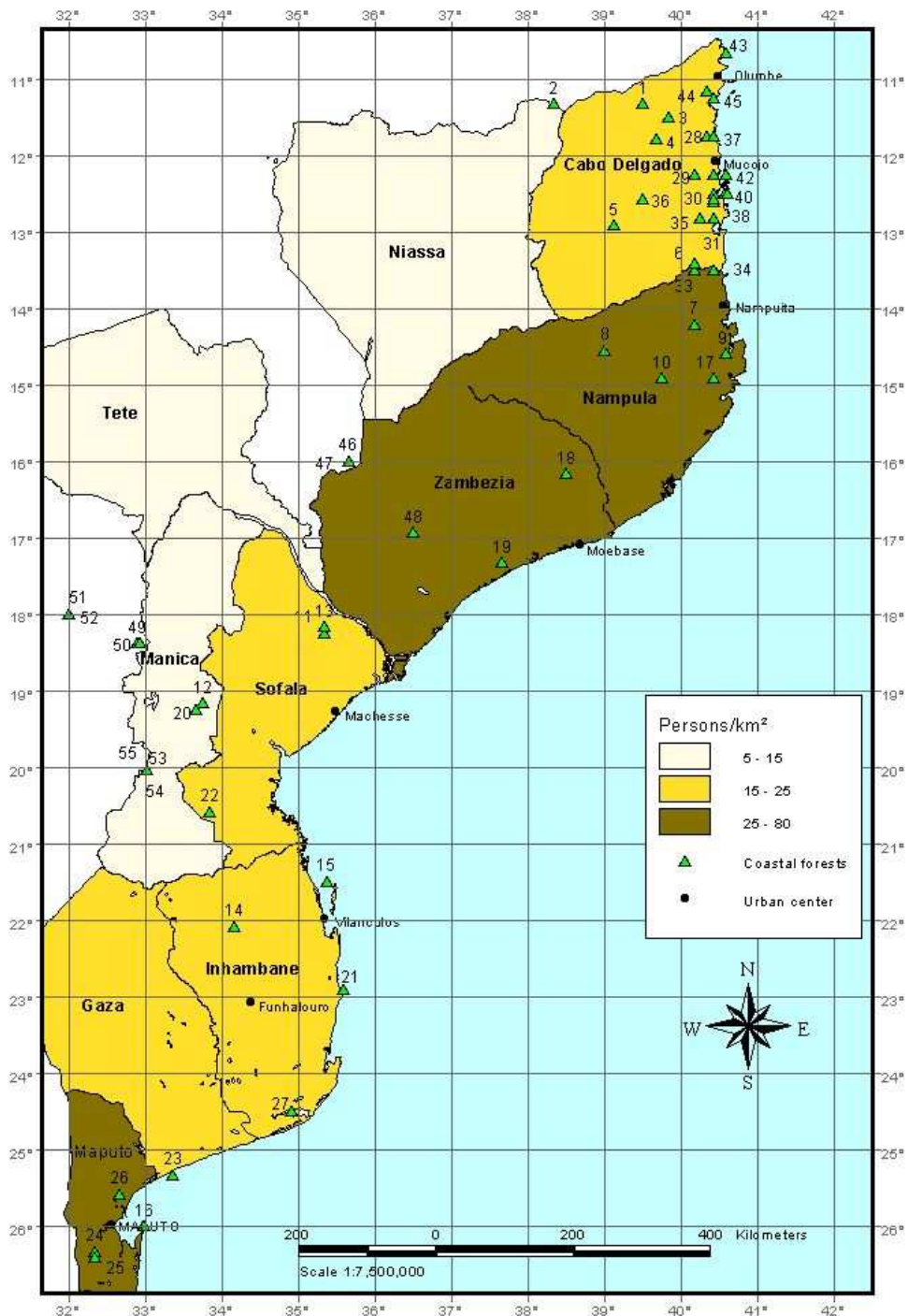


Fig 17. Population distribution in Mozambique - 1994 estimate.



**TABLE 1: LIST OF KENYA FORESTS**

No	Country	Forest Name	Pr_region	District	Grid_Loc	Alt	Q_Area	Min_Area	Are_codes	Vegetation Type	Status	Threat	Type_Threat
1	SOMALIA	Shoonto	Southern	Bu'aale - Fanoole	0104N 4236E	0 - 20	3	?			FR		
2	SOMALIA	Bedida forest	Southern	Bu'aale - Fanoole	0108N 4236E	0 - 20	1	?			FR		
3	SOMALIA	Boni	Southern	?	?	?	? large	?		Woodland/bushland	?		
4	KENYA	Boni NR	North-Eastern	Garissa	0120S 4120E	50	1358	100	IV	Woodland/bushland/forest	NR	H	R,AG
5	KENYA	Boni prop FR	Coast	Lamu	0140S 4051E	0 - 100	184.66	100	IV	Woodland/bushland	Proposed FR	VH	Not protected; R, S, AG
6	KENYA	Dodori NR	Coast	Lamu	0143S 4056E	0 - 20	877	20	III	Woodland/bushland/forest	NR, 1976	H	R, AG
7	KENYA	Lunghi prop FR	Coast	Lamu	0144S 4045E	0 - 20	95.17	80	IV	Woodland/bushland	Proposed FR	H	R, S,AG
8	KENYA	Witu FR	Coast	Lamu	0222S 4030E	10- 20	39.37	14	III	Forest	FR, order 454:1962	VH	R,S,AG
9	KENYA	Witu FR extension	Coast	Lamu	0223S 4031E	20	0.1	0.9	I	Forest	FR	VH	NP,R,AG,S
10	KENYA	Ras Tenewi area	Coast	Lamu, Tana River	0229S 4040E	0 - 60	105	20	III			H	NP,R,AG,S
11	KENYA	Bura gallery forests (incl. Nanigi & Chewele)	Coast	Tana River	0105S 3955E	60	1	1	I	Forest		VH	NP,R,AG,S
12	KENYA	Arawale Reserve	Coast	Tana River	0105s 4020E	0- 60?	542	1	I	Bushland, grassland	NR, Date?	VH	NP,R,AG,S
13	KENYA	Wayu I, Wayu II, Wayu III & Kokani forests	Coast	Tana River	?	?	112	100	IV	Forest	Proposed FR	VH	NP,R,AG,S
14	KENYA	Mbia	Coast	Tana River	0137S 4006E	45	1	1	I	Forest		VH	NP,R,AG,S

No	Country	Forest Name	Pr_region	District	Grid_Loc	Alt	Q_Area	Min_Area	Are_codes	Vegetation Type	Status	Threat	Type_Threat
15	KENYA	Tana River Primate NR	Coast	Tana River	0143S 4003E	30 - 50	171	11	III	Forest	NR, 1975	VH	R,AG,S
16	KENYA	Lower Tana forests (30+ patches, incl. 26)	Coast	Tana River	0210S 4010E	10- 30		10	III	Forest		VH	NP,R,AG,S
17	KENYA	Kanwe Mayi forest fragments (5 - 7 patches)	Coast	Tana River	0227S 4028E	10	1	1	I	Forest		VH	NP,R,AG,S
18	KENYA	Tana Delta	Coast	Tana River	0230S 4020E	0- 60?	3400	20	III	Forest		VH	NP,R,AG,S
19	KENYA	Dakawachu Hill	Coast	Malindi	0241S 3937E	227	0.1	0.1	I	woodland/bushland		L	
20	KENYA	North Malindi Brachystegia woodlands (4 sites)	Coast	Malindi	0250S 3950E	50 - 100	300	300	V	Woodland (part degraded)		H	R, S
21	KENYA	Dakabuko Hill	Coast	Malindi	0253S 3938E	356	5	5	II	Woodland		L	
22	KENYA	Werune Cliffs	Coast	Malindi	0256S 3952E	80 - 100	1	1	I	Woodland		L	
23	KENYA	Ras Ngomeni dune forest & woodland	Coast	Malindi	0258S 4008E	50	1	1	I	Forest / woodland		H	U, R, S
24	KENYA	Devil's / Hell's Kitchen	Coast	Malindi	0301S 3957E	45 - 80	1	1	I	woodland		H	S, R
25	KENYA	Kaya Bore	Coast	Malindi	0303S 3953E	115	0.5	0.4	I	woodland		VH	R, S
26	KENYA	Kaya Singwaya	Coast	Malindi	0306E 3951E	60	0.1	0.1	I	Forest / woodland	NM	L	
27	KENYA	Kaya Kirimani	Coast	Malindi	0307S 3951E	50	< 1	0.25	I			?	

No	Country	Forest Name	Pr_region	District	Grid_Loc	Alt	Q_Area	Min_Area	Are_codes	Vegetation Type	Status	Threat	Type_Threat
28	KENYA	Kayas Dagamura, Starehe & Kilulu	Coast	Malindi	0307S 3955E	45	1	1	I	Forest/ woodland	NM	L	
29	KENYA	Kaya Bura	Coast	Malindi	0308S 3956E	45	1	0.5	I	Forest / woodland	NM	L	
30	KENYA	Kaya Bate	Coast	Malindi	0311S 3955E	30	0.25	0.25	I	Forest / woodland	NM	L	
31	KENYA	Mangea Hill	Coast	Kilifi	0315S 3943E	10 - 520	35	15	III	Forest, degraded	Proposed FR & NR	VH	R, S
32	KENYA	Gede Ruins	Coast	Malindi	0318S 4000E	15	0.35	0.35	I	Forest	NM	L	
33	KENYA	Arabuko-Sokoke FR & NP	Coast	Kilifi & Malindi	0320S 3955E	0 - 210	417.64	370	V	Forest / woodland	FR, 1943; NP, 1990	H	R, S, U
34	KENYA	Kizingo Hill	Coast	Kilifi	0315S 4006E	20	0.1	0.1	I	Forest, degraded		H	R, S
35	KENYA	Rare River Gorge	Coast	Kilifi	0327S 3945E	120	0.1	0.1	I	Forest		H	R, S
36	KENYA	Kambe Rocks Sacred Grove	Coast	Kilifi	0332S 3939E	90	0.25	0.25	I	Forest on limestone outcrop		H	R, S
37	KENYA	Mulungu Mawe & Bikisaga SG	Coast	Kilifi	0333S 3937E	165	0.1	0.05	I			H	R,S
38	KENYA	Njora River Gorge	Coast	Kilifi	0334S 3943E	75	0.1	0.1	I	Forest on limestone outcrop		H	R, S
39	KENYA	North of Jaribuni forest patch	Coast	Kilifi	0335S 3944E	120	0.1	0.1	I	Forest		H	R, S
40	KENYA	Mnarani	Coast	Kilifi	0338S 3950E	20	0.01	0.01	I	Forest	NM	L	
41	KENYA	Ndzovuni River Gorge	Coast	Kilifi	0339S 3943E	100	0.01	0.01	I	Forest		H	R, S
42	KENYA	Vyambani cliffs	Coast	Kilifi	0339S 3944E	100 - 170	0.01	0.01	I	Forest		VH	R, S

No	Country	Forest Name	Pr_region	District	Grid_Loc	Alt	Q_Area	Min_Area	Are_codes	Vegetation Type	Status	Threat	Type_Threat
43	KENYA	Kaya Chivara	Coast	Kilifi	0341S 3941E	324	1.5	1.5	II	Forest / woodland	NM	H	R, S, U
44	KENYA	Cha Simba Sacred Grove	Coast	Kilifi	0344S 3941E	200	0.2	0.2	I	Forest on limestone outcrop		VH	R, S
45	KENYA	Kaya Fungo / Giriama	Coast	Kilifi	0347S 3930E	180	2.04	2.04	II	Forest / woodland	NM	L	
46	KENYA	Kaya Chonyi/Achonyi FR	Coast	Kilifi	0347S 3940E	210	2	0.2	I	Forest	FR	VH	R, S
47	KENYA	Vipingo Caves Sacred Grove	Coast	Kilifi	0348S 3949E	15	0.1	0.1	I	Forest		VH	U, R, S
48	KENYA	Kaya Koyeni	Coast	Kilifi	0349S 3940E	210	0.07	0.07	I	Forest		VH	R, S
49	KENYA	Kaya Mudzimuvia	Coast	Kilifi	035?S 393?E	?	1.71	1.71	II	Forest	NM	H	R, S
50	KENYA	Kaya Jibana FR	Coast	Kilifi	0350S 3940E	308	1.4	1.4	II	Forest	FR	H	R, S
51	KENYA	Kaya Tsolokero	Coast	Kilifi	0350S 3944E	135	0.25	0.25	I	Forest degraded		H	R, S
52	KENYA	Kaya Kambe / Mbwaka Kaya & FR	Coast	Kilifi	0351S 3938E	180	0.75	0.6	I	Forest	FR	H	R, S
53	KENYA	Pangani Rocks Sacred Grove	Coast	Kilifi	0351S 3940E	75	0.4	0.4	I	Forest on limestone outcrop		H	R, S
54	KENYA	Kaya Ribe	Coast	Kilifi	0353S 3937E	105	0.36	0.36	I	Forest	FR	H	R, S
55	KENYA	Bedida forest	Coast	Kilifi	0353S 3937E	105	0.3	0.3	I	Forest	NM	H	R, S
56	KENYA	Kaya Fimboni / Bomu	Coast	Kilifi	0355S 3935E	150	4.09	4.09	II	Forest	NM	H	R, S
57	KENYA	Mtwapa Creek north bank	Coast	Kilifi	0356S 3942E	30	1	1	I	forest		VH	U, R, S
58	KENYA	Mtwapa NM	Coast	Kilifi	0356S 3945E	10	0.05	0.05	I	forest	NM	H	U, R, S

No	Country	Forest Name	Pr_region	District	Grid_Loc	Alt	Q_Area	Min_Area	Are_codes	Vegetation Type	Status	Threat	Type_Threat
59	KENYA	Kaya Mwidzimwiru	Coast	Kilifi	0357S 3934E	255	1.47	1.47	II	Forest, degraded	NM	VH	U, R, S
60	KENYA	Kaya Kauma	Coast	Kilifi	0357S 3944E	120	0.75	0.75	I	dry forest	NM	H	R, S
61	KENYA	Madunguni	Coast	Malindi	poss. near 49		9	2	II	Forest, degraded		VH	U, R, S
62	KENYA	Kaya Maiowe	Coast	Kilifi	0307S 3955E	?	0.6	0.6	I	Forest / woodland	NM	L	
63	KENYA	Nguu Tatu hill	Coast	Mombasa	0358S 3940E	15 - 75	0.01	0.01	I			H	U, R, S
64	KENYA	Kaya Shonda	Coast	Mombasa	0406S 3938E	30	0.1	0.1	I	Forest degraded	NM	VH	U, R, S
65	KENYA	Kaya Mlele	Coast	Mombasa	040?S 393?E	?						VH	R, S
66	KENYA	Similani Caves Sacred Grove	Coast	Mombasa	0408S 3938E	5	0.1	0.1	I	Forest	NM	H	U, R, S
67	KENYA	Taru & Kilisa Hills	Coast	Kwale	0345S 3906E	500	0.3	0.3	I	Forest degraded		H	R, S
68	KENYA	Mariakani west forests (Kumbulu & Gobwe)	Coast	Kwale	0352S 3921E	320	1	1	I	Forest/ woodland		H	R, S
69	KENYA	Mwache FR	Coast	Kwale	0400S 3932E	20 -	4.17	2.85	II	Forest	FR	H	U, R, S
70	KENYA	Kaya Gandini / Takawa / Duruma	Coast	Kwale	0401S 3930E	140 -	1.5	1.5	II	Forest	NM	H	R, S
71	KENYA	Kaya Mtswakara	Coast	Kwale	0401S 3931E	20 -	2.48	2.48	II	Forest	NM	H	R, S
72	KENYA	Kaya Chonyi (Jivani)	Coast	Kwale	0403S 3931E	50	1.14	1.14	II	Forest/ woodland	NM	L	
73	KENYA	Mwaluganji FR	Coast	Kwale	0404S 3926E	30 -	17.15	14	III	Forest degraded	FR	VH	Elephants

No	Country	Forest Name	Pr_region	District	Grid_Loc	Alt	Q_Area	Min_Area	Are_codes	Vegetation Type	Status	Threat	Type_Threat
						300							
74	KENYA	Kaya Chitanze / Kitsantse forest	Coast	Kwale	0407S 3928E	280	0.1	0.1		Iforest	NM	H	U, R, S
75	KENYA	Kaya Lunguma	Coast	Kwale	0407S 3931E	100	1.55	1.55		IIelephant degraded forest	NM	VH	Elephants
76	KENYA	Kaya Bombo NM	Coast	Kwale	0407S 3934E	90	0.1	0.1		Iforest	NM	L	
77	KENYA	Kaya Kiteje NM	Coast	Kwale	0407S 3934E	20	0.1	0.1		Ibushland	NM	H	U, R, S
78	KENYA	Kaya Teleza / Dugumura Hill SG	Coast	Kwale	0408S 3930E	255	0.67	0.67		Iforest	NM	H	R, S
79	KENYA	Kaya Miyani	Coast	Kwale	0409S 3926E	400	c. 0.25	0.2		IForest, degraded		H	R, S
80	KENYA	Kaya Waa NM	Coast	Kwale	0411S 3936E	15	0.3	0.3		IForest degraded	NM	VH	U, R, S
81	KENYA	Shimba Hills NR	Coast	Kwale	0415S 3920E	100 - 448	192.6	63		IVforest, woodland	NR, 1968	H	R, S
82	KENYA	Kaya Tiwi NM	Coast	Kwale	0415S 3935E	5	0.1	0.1		Iforest	NM	H	R, S
83	KENYA	Mkongani North FR	Coast	Kwale	0416S 3918E	100 - 200	11.13	11		IIIforest	FR: order 406, 1956	H	R, S
84	KENYA	Kaya Diani NM	Coast	Kwale	0416S 3935E	15	0.2	0.2		Iforest	NM	VH	U, R, S
85	KENYA	Mkongani West FR	Coast	Kwale	0417S 3916E	100 - 200	13.66	13.66		IIIforest	FR: order 406, 1956	H	R, S
86	KENYA	Kaya Ukunda NM	Coast	Kwale	0418S 3933E	20	0.25	0.25		Iforest degraded	NM	VH	U, R, S
87	KENYA	Kaya Muhaka /	Coast	Kwale	0419S	45	1.5	1.5		IIforest	NM	H	R, S

No	Country	Forest Name	Pr_region	District	Grid_Loc	Alt	Q_Area	Min_Area	Are_codes	Vegetation Type	Status	Threat	Type_Threat
		Kambe / Mwadabara NM			3931E								
88	KENYA	Diani / Jadini Forest	Coast	Kwale	0419S 3933E	10	0.8	0.8		I coral rag forest		VH	U, R, S
89	KENYA	Mwereni Brachystegia woodland	Coast	Kwale	0420S 3911E	150	1.5	1.5		II woodland		H	R, S
90	KENYA	Dzombo (Jombo)	Coast	Kwale	0423S 3912E	462	9.02	9.02		II forest	NM in FR	H	R, S
91	KENYA	Kaya Galu/Ganzoni NM	Coast	Kwale	0423S 3950E	5	0.1	0.05		I forest	NM	VH	U, R
92	KENYA	Kaya Ngalaani/Kinondo NM	Coast	Kwale	0423S 3932E	5	0.3	0.3		I forest	NM	H	U, R, S
93	KENYA	Gongoni FR	Coast	Kwale	0424S 3928E	10 - 70	8.24	6.35		II forest	FR: order 44, 1932	H	R, S
94	KENYA	Buda Mafisini FR	Coast	Kwale	0426S 3923E	70 - 80	6.68	6		II forest	FR: order 44, 1932	H	R, S
95	KENYA	Kaya Chale / Chale Island SG NM	Coast	Kwale	0426S 3931E	6	0.5	0.25		I forest	NM	VH	U, R, S
96	KENYA	Mrima FR	Coast	Kwale	0428S 3915E	80 - 300	3.77	2.9		II forest	FR: order 304, 1961	H	R, S
97	KENYA	Marenji FR	Coast	Kwale	0429S 3912E	30 - 160	15.29	15		III forest	FR: order 50, 1967	H	R, S
98	KENYA	Palm woodland, Ramisi (3 patches)	Coast	Kwale	0433S 3918E	15	10	10		II woodland		H	R, S
99	KENYA	Kaya Sega NM	Coast	Kwale	0433S	60	0.5	0.5		I NM	NM	L	



No	Country	Forest Name	Pr_region	District	Grid_Loc	Alt	Q_Area	Min_Area	Are_codes	Vegetation Type	Status	Threat	Type_Threat
					3906E								
100	KENYA	Chuna gallery forest	Coast	Kwale	0433S 3908E	40	1	1		I forest woodland		H	R, S
101	KENYA	Gonja FR	Coast	Kwale	0434S 3907E	30 -	8.42	6		II forest	FR: order 304, 1961	H	R
102	KENYA	Miongoni gallery forest	Coast	Kwale	0436S 3901E	20	0.8	0.7		I forest		VH	R, S
103	KENYA	Shimoni forest	Coast	Kwale	0437S 3921E	20	0.6	4		II forest degraded		H	U, R, S
104	KENYA	Kaya Jego NM	Coast	Kwale	0438S 3911E	10	0.1	0.1		I forest	NM	L	
105	KENYA	Kaya Bogowa NM	Coast	Kwale	0439S 3923E	5	0.1	0.05		I degraded forest	NM	L	
106	KENYA	Lunga Lunga gallery forest	Coast	Kwale	0437S 3907E	40	1	1		I forest woodland		H	R, S
107	KENYA	Kilibasi hill	Coast	Kwale, Taita Taveta	0357S 3857E	400 -	2	2		II forest, woodland	None	H	R
108	KENYA	Kitovu	Coast	Taita, Taveta	0326S 3736E	700	0.5	0.5		I		?	

**TABLE 2: LIST OF TANZANIA COASTAL FORESTS**

NO	Name	Region	District	Threat	Cause	Lat/long	Quoted area	Min area	Vegetation	Status	Comments
1	Kiono / Zaraninge	Coast	Bagamoyo	Very High	Encroachment, agricultural expansion	0608S 3838E	18	20	Evergreen forest, woodland	PFR: LA	Forest extends beyond reserve. Non-productive LA reserves are low priority relative to
2	Uzigua	Coast	Bagamoyo	High	Logging and	0605S 3800E	248		Miombo and	FR: 1958 GN	

NO	Name	Region	District	Threat	Cause	Lat/long	Quoted area	Min area	Vegetation	Status	Comments
					charcoal					466/26/9/1958	
3	Bagala and Msua	Coast	Kibaha	Very High	Tree cutting, logging, charcoal, poaching,	0645S 3825E	60	10	Thicket, woodland, closed fo	Public lands	Not gazetted, high biodiversity, but not protected, no boundary.
4	Ruvu North	Coast	Kibaha	Very High	Charcoal Population increase	0633S 3855E	405	2	Woodland, riverine/swamp for	Productive FR: 1959/67	Formerly had plantation. Villagers given plots to grow commercial fuelwood on 10 year
5	Mbudya and Bongoyo	Dar es Sa	Kinondoni	Low	Inaccessible, uninhabited island	0640S 3915E			Coastal thicket	Within Marine Reserve	
6	Kazimzumbwi	Coast	Kisarawe	Very high	Encroachment, charcoal, fire, poles, over e	0700S 3903E	49	24	High canopy forest, former c	FR: German	Some fires started by aggrieved people expelled from FR, needs more enforcement and aw
7	Kisiju / Dendene	Coast	Mkuranga	Very high	Encroachment, charcoal, fire, poles, over e	0721S 3920E	2	2	Lowland evergreen forest, cl	PFR: LA	Not yet gazetted - proposed, last area of gum copal forest.
8	Pugu	Coast	Kisarawe	Very high	Mining, telecommunication towers, poles, tim	0654S 3905E	22	10	Coastal Forest	FR: German	Telecommunications towers - FBD have recommended that users use a single tower, threat
9	Vikindu	Coast	Mkuranga	Very high	Charcoal Poles encroachment and refuse dump	0659S 3917E	18	5	Plantation, cultivation, riv	FR: German	Forest in the danger of being lost, on the verge of disappearing, 75% converted into a
10	Masanganya	Coast	Kisarawe	Very high		0715S 3900E	26			FR:1949	Data to be obtained from RNRO
11	Ruvu South	Coast	Kisarawe & Ki	Very high	Charcoal, poles, fire, logging, cultivation	0658S 3900E	350	20	Mosaic of thicket, woodland,	FR: 1958/79	Wrong shape

NO_	Name	Region	District	Threat	Cause	Lat/long	Quoted area	Min area	Vegetation	Status	Comments
12	Kilindoni	Coast	Mafia	Very high	Encroachment	0755S 3940E	0	0?		?	May no longer exists - needs re-survey
13	Mlola	Coast	Mafia	Very high	High pressure for forest products	0753S 3951E	3	3	Dry forest, swamp forest wit	NP: Mafia, 1995	See WWF for data on
14	Juani Island	Coast	Mafia	Very high	High pressure for forest products	0800S 3943E			Coral rag thicket	NP: Mafia, 1995	
15	Katundu	Coast	Rufiji	Very High	Roads, logging encroachment	0803S 3846E	47		Woodland with small areas of	FR: 1966 GN 153/3/6/1966	Road to Selous passes straight through reserve, logging threat high, encroachment from
16	Kichi Hills	Coast	Rufiji	Very high	Logging, roads, charcoal, shifting cultivat	0812S 3840E	14	20	Evergreen coastal forest, wo	PFR	Regenerating, high biodiversity.
17	Kikale	Coast	Rufiji	High	Logging	0744S 3956E	10		Woodland	FR:1947 Cap. 132 P. 1351	
18	Kingoma	Coast	Rufiji	High	Agriculture, Timber harvesting	0735S 3908E	10		Woodland & thicket forests	FR: ?	On topographic sheet as Forest Reserve but not listed in List of TZ forest reserves. R
19	Kipo	Coast	Rufiji	High	Encroached, agricultural and settlement.	0752S 3832E	17		Woodland and riverine forest	FR: GN Cap. 132. P.1351	Village within reserve, re-survey, map, demarcate and management plan.
20	Kirengoma Or Kiwengoma?	Coast	Rufiji	Low	Under increasing pressure, cultivation to ed	0819S 3853E	35	22	Evergreen Coastal Forest, ri	FR	Good forest but threats on edge.Forest on Kilwa side of Kiwengoma is at present unprot
21	Mchungu	Coast	Rufiji	High	Under increasing exploitation - logging	0741S 3917E	9	2	Evergreen Forest thicket, so	FR: German	Re-survey, map, inventory and management plan.
22	Mohoro	Coast	Rufiji	Very High	Encroached and over - exploited,	0809S 3907E	23		Evergreen coastal forest, wo	FR: Cap. P. 1349	Re-survey, map, inventory and

NO_	Name	Region	District	Threat	Cause	Lat/long	Quoted area	Min area	Vegetation	Status	Comments
					logging, p						management plan.
23	Mohoro River	Coast	Rufiji	Very High	Unknown	0811S 3910E	0		Riverine evergreen coastal f	FR: 1966 204/22/7/1966	Re-survey, map, inventory and management plan.
24	Mpanga	Coast	Rufiji	Low?	Unknown	0750S 3755E	9			GR	Now part of the Selous originally gazetted as a forest reserve.
25	Mtanza	Coast	Rufiji	High	Encroached overexploited settlement.	0749S 3824E	49		Woodland, riverine forest, s		Re-survey, map, inventory and management plan.
26	Mtita	Coast	Rufiji	Very High	Over exploited	0731S 3856E	30		Coastal forest, woodland.	Degazetted	Formerly gazetted 329/21/7/1960
27	Namakutwa-Nyamute	Coast	Rufiji	High	Exploited	0817S 3903E	46	12	Forest and transitional Brac	FR: German	Management needs to be implemented, and or management plan reveiwed as forest degraded
28	Ngulakula	Coast	Rufiji	Very high	Encroached overexploited, charcoal, logging	0749S 3852E	24		Woodland, thicket and coasta	FR:LA	Re-survey, map, inventory and management plan.
29	Nyumburuni	Coast	Rufiji	Very High	Encroached overexploited, charcoal, logging	0754S 3902E	31		Thicket and woodland	Local Authority Reserve	Mangement implemetation and boundary marking.
30	Ruhoi	Coast	Rufiji	Very High	Over exploited and encroached, logging, far	0750S 3745E	686		Coastal forest, riverine for	FR:LA	Re-survey, map, inventory and management plan.
31	Rupiage	Coast	Rufiji	High	Under increasing encroachment farming, logg	0759S 3833E	41		Woodland and thicket	FR: ?	Re-survey, map, inventory and management plan.
32	Tamburu	Coast	Rufiji	Very High	Encroached and over exploited	0815S 3908E	60		Coastal forest and thickets,	FR: GN Cap. 132 P. 1351	Re-survey, map, inventory and management plan.
33	Utete	Coast	Rufiji	Very	Farming, charcoal	0801S 3844E	9		Woodland,	FR: Cap. 132.	Requires management

NO_	Name	Region	District	Threat	Cause	Lat/long	Quoted area	Min area	Vegetation	Status	Comments
				High	and logging.				riverine forest an	P. 1351	operations - boundary markings and patrol.
34	Pande	Dar es Sa	Kinondoni	Very high	Charcoal, logging, fires.	0642S 3905E	12	11	Grassland, thicket/forest an	GR: 1988	Requires management plan.
35	Gongolamboto	Dar es Sa	Ilala	Low	Graveyard.	0655S 3910E	0	0	Coastal forest remnant with	graveyard	
36	Kitope Hill	Lindi	Kilwa	High	Timber/Fire	0820S 3910E	34	8	Degraded Forest	FR: German	
37	Mbinga Kinanji	Lindi	Kilwa	High		0831S 3850E	19	6	Evergreen thicket lowland fo	FR: 1957 GN 102/27/1957	
38	Mitundumbea	Lindi	Kilwa	High	Timber	0910S 3916E	86	3	Miombo and coastal thicket	FR: 1957	
39	Nang'oma Caves	Lindi	Kilwa	Very high	Shifting cultivation	0827S 3853E	0	0	Evergreen closed canopy fore	To be part of made a nation	
40	Ngarama North and South	Lindi	Kilwa	Very high	Fire and lumbering	0922S 3920E	417	10	Riverine forest and woodland	FR: 1955/57	Lowland area between Ngarama north and south is a proposed game reserve.
41	Pindirolu / Bwatabwata	Lindi	Kilwa	Unknown	Cultivation	0930S 3916E	118	5	Miombo and patches of closed	FR: German	
42	Rungo	Lindi	Kilwa	Unknown		0930S 3900E	226		Miombo ? Some coastal forest	FR: 1956	
43	Mbawalawala Plateau	Lindi	Kilwa	High	Timber	0928S 3913E			Forest		
44	Mitarure Forest Reserve	Lindi	Kilwa	?	Timber - Mpingo extraction	0855S 3905E			Miombo with 'good green thic	FR?	
45	Tong'omba	Lindi	Kilwa	High	Timber	0825S 3901E	25	11	Mosaic of forest types	FR: German	
46	Chitoo	Lindi	Lindi	High	Potential timber	0957S 3927E	59	6	Scrub, dry evergreen forest	FR: German	
47	Kiwawa plateau	Lindi	Lindi	Very high		0946S 3916E			Mosaic of patches of scrub f	Public lands	
48	Likonde plateau	Lindi	Lindi	Very high		0948S 3927E			Thought to contain forest si	Public lands	

NO_	Name	Region	District	Threat	Cause	Lat/long	Quoted area	Min area	Vegetation	Status	Comments
49	Litipo	Lindi	Lindi	High	Firewood	1002S 3929E	10	4	Dry evergreen forest, riveri	FR: German	
50	Namikupula	Lindi	Lindi	?		1052S 3955E				Public lands	In Mozambique
51	Ndimba	Lindi	Lindi	High	Firewood and polecutting	0935S 3937E	27	5	Dry forest and fallow cultiv	FR: German	
52	Noto plateau	Lindi	Lindi	Very high	Timber	0952S 3922E			Evergreen coastal forest.	Public lands	
53	Nyangamara	Lindi	Lindi	Very high	Polecutting	1023S 3935E	9		Dry forest and bamboo.	Public lands	
54	Rondo	Lindi	Lindi	High	Fire	1010S 3910E	140	25	Dry evergreen forest, transi	FR: German	
55	Ruawa	Lindi	Lindi	High		0944S 3933E	30		Evergreen coastal forest.	FR: German	
56	Sudi	Lindi	Lindi	Very high	Timber	1006S 3953E				Public lands	
57	4km north of Mchinga Mbil	Lindi	Lindi	?		0941S 3943E			Dry forest dominated by Cyno	Public lands?	
58	Baobab Forest patch near	Lindi	Lindi	?		0951S 3647E			Baobab forest	Public lands?	
59	Chiponda	Lindi	Lindi	High	Cultivation	1011S 3926E					
60	Kikwetu	Lindi	Lindi	High	Firewood Fire	0951S 3947E			Baobab forest		
61	Kitunda	Lindi	Lindi	High	Cultivation	1005S 3948E					
62	Liwengula	Lindi	Lindi	High		1000S 3933E	2983		Cashnewnut woodland with som	Formerly FR, degazetted 196	
63	Makangala	Lindi	Lindi	High	Timber	1000S 3922E				LA 1958	
64	Matepwa	Lindi	Lindi	High		0942S 3917E	165		Wooded grassland and riverin	FR: German	
65	Mchinga mbili	Lindi	Lindi	High		0941S 3943E			Dry forest with Cynometra fi	Public lands	
66	Mlinguru	Lindi	Lindi	High		1006S 3944E					
67	Mnacho	Lindi	Lindi			1017S 3912E	1129		Thicket and scrub,	Proposed LA	

NO	Name	Region	District	Threat	Cause	Lat/long	Quoted area	Min area	Vegetation	Status	Comments
						??			planted w	FR	
68	Mtama	Lindi	Lindi	Very High	Cultivation	1019S 3917E				LA 1958	
69	Nandimba	Lindi	Lindi	High		0957S 3906E				Degazetted	
70	Tendaguru Hill	Lindi	Lindi	?		0942S 3913E			Wooded grassland	Public lands?	
71	Lungonya	Lindi	Liwale	Low		0845S 3835E			Ground water forest and miom	FR 1957 now part of Selous	
72	Nyera Kiperere	Lindi	Liwale	Low		0945S 3815E				FR 1956	
73	Lionja	Lindi	Nachingwea			1017S 3824E				FR 1958	
74	Pande	Lindi	Kilwa	High	Cultivation	0910S 3934E			Evergreen Forest	Public lands	
75	Iwonde	Morogoro	Kilombero	Low	Fire Cultivation Logging	0757S 3637E	247		Brachystegia woodland and ri	FR 1958 Partly incorporatd	New to list
76	Masagati	Morogoro	Kilombero	High	Logging	0903S 3540E	65	64	Lowland forest, some swamp g	FR 1955 GN89 of 18/3/55 var	Secondary - Logged in 1960's
77	Matundu	Morogoro	Kilombero	High	Logging	0801S 3626E	176		Lowland forest and woodland	FR1958 GM 555 of 19/12/58	New to list
78	Mwanihana	Morogoro	Kilombero	Low		0748S 0651E	179		Eastern Arc grading into low	np ? FR 1958 GN1958 of 28/2	New to list - does this count as CF???
79	Nyanganje	Morogoro	Kilombero	High	Pitsawing, fire, cultivation	0800S 3639E	190		Woodland and riverine forest	FR 1958 GN555 of 19/12/58	New to list
80	Udzungwa Scarp	Morogoro	Kilombero	High	Logging	0822S 3556E	202		Eastern Arc Montane forest g	FR 1929 GN 198 variation or	New to list - does this count as CF???
81	Kihiliri	Morogoro	Kilosa	High	Previously logged, charcoal, fire.	0649S 3657E	2		Woodland and riverine forest	FR 1954 GN 373 of 16/8/1963	New to list - does this count as CF???
82	Dindili	Morogoro	Morogoro	High		0639S 3757E	10	3	dry colsed forest	FR: 1953	
83	Kilandiwe Hill	Morogoro	Morogoro	Unknown		0622S 3744E		2		Public lands, private ranch	
84	Kimboza	Morogoro	Morogoro	High	Logging	0701S 3748E	4	4	Lowland forest.	FR 1964 GN 417 11/7/64	

NO	Name	Region	District	Threat	Cause	Lat/long	Quoted area	Min area	Vegetation	Status	Comments
85	Magotwe	Morogoro	Morogoro	High	Encroachment, pole cutting	0602S 3739E	7	7	Dry lowland forest and lowla	PFR	
86	Msavula Hill	Morogoro	Morogoro	Unknown		0627S 3745E		2		Public lands, private ranch	
87	Pagale Hill	Morogoro	Morogoro	High	Fires and hunting	0610S 3750E	130	130	Dry lowland forest and woodl	FR: 1959 GN 81 Of 13/3/59	
88	Ruvu	Morogoro	Morogoro	High	Ruby mining	0658S 3751E	31	30	Lowland forest	FR: 1955 GN 200 of 3/6/55	Similar to Kimboza FR
89	Dunduma	Morogoro	Morogoro	Very high	Firewood	0610S 3737E	1		Woodland and lowland forest	FR ?	
90	KitulangHalo	Morogoro	Morogoro	Very high	V. high pouplation	0639S 3757E	26	30	Brachystegia woodland and dr	FR: 1955 GN 198 3/6/55	
91	Mkindo	Morogoro	Morogoro	Low	Previously cleared for cultivation.	0614S 3731E			Lowland and riverine forest	FR 1954 GN 409 of 3/12/1954	New to list - does this count as CF???
92	Mkungwe	Morogoro	Morogoro	High		0653S 3755E					
93	Mvuha and Chamanyani	Morogoro	Morogoro	High	Encroachment, grazing, fire.	0710S 3749E	15		Woodland and riverine forest	FR German Cap. 137/1958	New to list
94	Mselezi	Morogoro	Ulanga	High		0846S 0852E	8	8		FR: Catchment	
95	Mahenge Scarp	Morogoro	Ulanga	High	Logging, cultivation.	0837S 3643E		3	Lowland Forest and woodland	FR 1954 GN312 of 24/9/54	New to list - Similar to Kimboza FR
96	Mselezi	Morogoro	Ulanga	Low?		0849S 3644E			Dry Lowland forest and river	FR 1954 GN 216 of 30/7/54 v	New to list - does this count as CF???
97	Nambiga	Morogoro	Ulanga	High?	Logging trapping	0834S 3629E	14		Eastern lowland groundwater	FR 1954 GN 51 26/2/54	New to list - does this count as CF???
98	Mtiniko / Mnivata	Mtwara	Mtwara rural	Very high		1034S 3956E		17		Public lands	
99	Mtuli / Hinju	Mtwara	Mtwara rural	Very high		1033S 3947E		3		Public lands	
100	Ziwani	Mtwara	Mtwara rural	High		1021S 3915E		8		FR: Prot. & Catch.	
101	Chilangala	Mtwara	Newala	High		1033S 3908E	6			FR: 1963	



NO	Name	Region	District	Threat	Cause	Lat/long	Quoted area	Min area	Vegetation	Status	Comments
102	Mahuta	Mtwara	Newala	High		1052S 3955E	15			FR: 1961	
103	Msitu Mkuu	Pemba Is.	Micheweni	High	Population increase	0455S 3940E		1	Coral rag forest	CBFM with village by law in	
104	Ngezi	Pemba Is.	Micheweni	Low	Tourism and population increase	0455S 3942E	14	8	Ground water forest and cora	FR: 1923?	
105	Ras Kiuyu	Pemba Is.	Micheweni	Very high	Urbanisation	0452S 3950E	1	2	Coral rag forest	Gazetted as central governm	
106	Kojani Island	Pemba Is.	Wete	High	Population increase	0509S 3952E	1	3	Coral rag forest	CBFM with Kojani Village by	
107	Jambangombe	Pemba Is.	Mkoani	High	Population increase	0519S 3942E	1	0	Coral rag forest	CBFM with Jambangombe Villa	Jambangombe south of mngelmena
108	Mgelema	Pemba Is.	Mkoani	High	Population increase	0519S 3942E	1	0	Ground water forest.	Public lands	
109	Genda Genda	Tanga	Handeni	Low	Fire	0530S 3839E	31	25	Forest, woodland patches, ri	FR:1947 Cap 132 p 1335 vari	EUCAMP Technical Paper No. 12 FBD under final process now, Elephants etc. Local cmmuni
110	Handeni Hill	Tanga	Handeni	High	Fire Poles	0527S 3830E	5	7	Dry lowland forest and woodl	FR: German	Participatory FR, threat lessened since 1998 (Pilot PFM)
111	Mbuzini	Tanga	Handeni	High	Agriculture, charcoal, fire	0538S 3800E		1	Dry scrub forest	Public lands	
112	Mgambo	Tanga	Handeni	High	Agriculture, charcoal, fire	0532S 3838E		20	Dry scrub forest	Public lands	
113	Bombo West	Tanga	Korogwe	Very high	Fire Grazing Poles	0450S3841E	35	10	Woodland/thicket Brachylaena	FR 1959	
114	Migombani	Tanga	Korogwe	Low	Previous logging	0458S3830E		1	Eastern Arc / Ground water f	FR 1950 GN300 of 1958 varia	Very small but good forest

NO	Name	Region	District	Threat	Cause	Lat/long	Quoted area	Min area	Vegetation	Status	Comments
115	Mweni-Gombelo	Tanga	Lushoto admin	High	Timber Poles	0440S3835E	10	8	Eastern Arc grading to lowla	CFR	Inadequate management
116	Bamba Ridge	Tanga	Muheza	High		0458S 3847E			Eastern Arc grading to coas	FR: 1958/79	
117	Bombo East I	Tanga	Muheza	Very high		0450S 3843E	5		Dry forest thicket	FR?	
118	Bombo East II	Tanga	Muheza	Very high		0449S 3840E	4		Dry forest thicket	FR?	
119	Horohoro	Tanga	Muheza	Very high	Charcoal, wood for carvings, grazing, salt,	0437S 3905E		1	Dry thicket	Public lands	Priority - acts as a buffer zone to east Usambaras
120	Kambai	Tanga	Muheza	High	Pole cutting	0500S 3842E	10	8	Dense lowland forest, bushla	FR: 1994 Gn 310	
121	Kilulu Hill ("Moa")	Tanga	Muheza	Very high	Charcoal, wood for carvings, grazing, salt,	0446S 3907E	16	0	Dry forest and thicket	Public lands	Was a proposed FR, degraded, Sisal Estate?
122	Kwamarimba	Tanga	Muheza	High	Poles Timber	0502S 3845E	9	5	Lowland forest, grassland, w	FR: 1913, 1934, 1954	
123	Kwangumi	Tanga	Muheza	High	Poles Timber	0457S 3842E	12	10	Eastern Arc grading to coas	FR: 1955	
124	Kwani	Tanga	Muheza	High (reduced)	Fire	0521S 3841E	25	10	Small part of hilltop evergr	FR: German	Pilot JFM now well protected
125	Longuza	Tanga	Muheza	Low	Timber Poles	0502S 3841E	16	12	Forest, disturbed forest, wo	FR: 1954 GN 194	Adjacent to Longuza Teak Plantation
126	Maforonya	Tanga	Muheza	High	Charcoal, wood for carvings, grazing, salt,	0440S 3910E			Brachylaena woodland	Public lands	
127	Magoroto	Tanga	Muheza	High	Cultivation, pole and timber cutting	0507S 3845E	11	2	Coastal forest with oil palm	PFR	Under leasehold to Magrotto Oil palm estate
128	Manga	Tanga	Muheza	High	Fire Pole	0502S 3847E	9	8	Forest grassland	FR: 1955	
129	Mgambo	Tanga	Muheza	High		0445S 3848E	8		Dry woodland	FR: 1998 GN 546	
130	Mlinga	Tanga	Muheza	High		0502S 3845E	9	4	Eastern arc forest grading t	FR: 1999 GN 285	

NO_	Name	Region	District	Threat	Cause	Lat/long	Quoted area	Min area	Vegetation	Status	Comments
131	Mlungui	Tanga	Muheza	High	Poles Timber Cultivation	0500S 3842E	2	2	Forest disturbed forest	PFR	Proposed FR
132	Mtai	Tanga	Muheza	High		0453S 3845E	31		Eastern Arc Forest grading t		Pilot JFM
133	Mtapwa	Tanga	Muheza	High		0455S 3853E	4	4	Coastal thicket in 1990	? Private land on Kapok or	
134	Pangani Falls	Tanga	Muheza	High	Charcoal, wood for carvings, grazing, salt,	0521S 3840E	1	1	Evergreen forest, riverine f	? Under leasehold to TANESC	To be joined with Kwani FR proposal
135	Segoma	Tanga	Muheza	High	Poles	0458S 3843E	12	11	Eastern Arc Forest grading t	FR: 1955	
136	Semdoe	Tanga	Muheza	High	Poles Timber	0457S 3842E	10	9	Disturbed Lowland forest, gr	FR 1998 GN 547	
137	Tongwe	Tanga	Muheza	High (reduced)	Charcoal, wood for carvings, grazing, salt,	0518S 3844E	12	3	Dry lowland forest and woodl	FR: German & 1956 GN 249 &2	To be joined with Kwani FR proposal
138	Mkwaja	Tanga	Pangani	Low	None	0552S 3847E	10	10	Acacia woodland, palms and ?	Forest Reserve and proposed	
139	Msubugwe	Tanga	Pangani	Low	None	0532S 3845E	44	44	Dry forest, grassland and th	FR: 1947	Recently joined to migratory corridor to Sadani NP.
140	Amboni Caves & Mkulumuzi	Tanga	Tanga Municip	Very high	Agricultural encroachment	0505S 3902E	4	4	Coastal Thicket	Under Protection of Monumen	Does it still exist??
141	Yambe Island	Tanga	Tanga Municip	Unknown		0506S 3910E	2	2	Coastal Thicket	Public lands	
142	Kole Kole	Tanga	Tanga Municip	Low	Pole cutting	0512S 3858E	3		Coastal Thicket and Plantati	FR:	Part of reserve is a plantation.
143	Uzi and Chumbe and other	Zanzibar	Central	Very high	Population	0612S 3910E	1		Coral rag thicket	General land	
144	Tumbatu	Zanzibar	North A Unguj	Very high		0550S 3912E	50		Coral rag thicket	Proposed CBFM	
145	Kiwengwa	Zanzibar	North B Unguj	Very high	Tourism and population	0600S 3922E?	50		Coral rag forest	Proposed National Park	

NO	Name	Region	District	Threat	Cause	Lat/long	Quoted area	Min area	Vegetation	Status	Comments
					increase						
146	Fragmented area of East C	Zanzibar	South and Nor	Very high	Farming Fire Population	0558S 3920E	600		Coral rag forest	Public forests (open)	
147	Jozani / Unguju	Zanzibar	South Unguja	Very high	Encroachment	0615S 3924E	50	3	Evergreen canopy forest, gra	Proposed National Park.	
148	Muyuni	Zanzibar	South Unguja	Very high	Fuelwood Farming	0620S 3925E	55	10	Coral Rag	Public lands	
149	Kiswapanza Is and Misali	Pemba Is	Mkoani	High	Population increase	0515S 3940E	1		Coral rag forest		
150	Pemba fragmented east coast	Pemba Is	All districts	Very high		0510S 3950E	400		Coral rag forest	Public forests (open)	
151	Nderema	Tanga	Handeni	High	Logging agriculture	0540S 3730E	39		Woodland, lowland and submon	FR 1934 GN 133 of 1934	Is this really Coastal forest??
152	Kilindi	Tanga	Handeni	Low		0537S 3734E	43		Lowland forest and riverine	FR 1969 GN 45 of 28/2/1969	New to list - does this count as CF???
153	Mbwegere	Tanga	Handeni	Low	Fires	0545S 37 29E	4		Woodland and forest	FR 1960 Cap. 132 p1335 Vari	New to list - does this count as CF???
154	Mkongo	Tanga	Handeni	High	Cutting and fires	0528S 3733E	99		Brachystegia woodland	FR 1959 Cap 389 p33/1959 va	New to list - does this count as CF???
155	Kwasumba	Tanga	Handeni	High	Timber, Poles and Fire	0539S 3803E	29	28	Dry scrub forest	FR	
156	Mtunguru	Tanga	Handeni	High	Poles, Fire	0536S 3805E	35	29	Dry woodland /scrub	FR: German	Poor inadequate management
157	Mkuli (Mkuri)	Tanga	Handeni	Low	Logging	0547S 3728E	29		Brachystegia woodland and dr	FR Cap. 389 p 32-33, variat	New to list - does this count as CF???
158	Mafi Hill	Tanga	Korogwe	Low	Minor pole cutting	0455S 3809E	27	20	Eastern Arc canopy forest gr	GN 230 variation GN 436 of	Note- Lovet and Pocs say that it was resurveyed in 1980 and increased to 45.08 km2 Pil

**TABLE 3: LIST OF MOZAMBIQUE COASTAL FORESTS**

No.	Country	Forest Name	Province/region	District	Grid Location	Altitude (m)	Quoted Area	Min Forest Area	Vegetation Type	Status	Endemism	Type of threats	Level of Threat
1	MOZAMBIQUE	Nangade	Cabo Delgado	Nangade	1120S 3930E		1800	1200	Riverine galleries and thicket ( <i>Guibortia schlebenii</i> ) woodland <i>undeferniated</i>	proposed cons. area	Endemism	Ag, I, F	H
2	MOZAMBIQUE	Negomano	Cabo Delgado	Negomano	1120S 3820E	149	> 100	100	<i>Brachystegia-Adansonii</i> forest	protected-Niassa reserve	Endemism	F, IH	L
3	MOZAMBIQUE	Mueda-east slope of the planalto	Cabo Delgado	Mueda	1130S 3950E	>500	>1000	?	<i>Brachystegia bohemii</i> forest	None		AG, L	H
4	MOZAMBIQUE	Mueda-southwest of the planalto (Chapa)	Cabo Delgado	Mueda	1147S 3940E	>500	>1000	?	<i>Brachystegia bohemii</i> forest	None		AG, L	H
5	MOZAMBIQUE	Nairoto	Cabo Delgado	Nairoto	1255S 3907E	?	> 100	100	Woodland <i>undeferniated</i>	None		F, L	H
6	MOZAMBIQUE	Namapa- Nacaroa	Nampula	Namapa	1330S 4010E	350	> 100	100	Coastal thicket, <i>grassland</i>	None	Endemism	AG, F	H
7	MOZAMBIQUE	Baixo Pinda	Nampula	Memba	1413S 4010E	110	196	?	Thicket	FR	Endemism	AG, F, L	V
8	MOZAMBIQUE	Mecuburi	Nampula	Mecuburi	1433S 3900E	300 - 500	1954	800	Mixture of coastal and interior miombo types	FR		AG, F, L	V
9	MOZAMBIQUE	Matibane	Nampula	Nacala	1436S 4035E	110	60	51	<i>Androstacys johnsonii</i> forest	FR		AG, F	V
10	MOZAMBIQUE	Muecate	Nampula	Muecate	1455S 3945E	350	> 100	?	<i>Adansonia / Pteleops</i> forest	none		AG, F	H



No.	Country	Forest Name	Province/region	District	Grid Location	Altitude (m)	Quoted Area	Min Forest Area	Vegetation Type	Status	Endemism	Type of threats	Level of Threat
11	MOZAMBIQUE	Inhamitanga	Sofala	Cheringoma	1815S 3520E	100	167		Moist lowland forest with <i>Pteleops</i> , <i>Erithrophleum</i> , and <i>Brachystegia</i>	part of area is forest reserve			V
12	MOZAMBIQUE	Amatongas	Manica	Gondola	1910S 3345E	400	?	?		None			V
13	MOZAMBIQUE	Complexo Cheringoma/Dondo	Sofala	Dondo, Cheringoma, Marromeu	1810S 3520E	50	>1000	?	Umbila, Motondo, PP, Missanda. <i>Bracstegia</i> .	Forest Concession, Qoutadas , NR, NP	Endemism		V
14	MOZAMBIQUE	Mabote	Inhambane	Mabote	2205S 3410E	0	?	?	<i>Androstacys johnsonii</i> dry forest			L,F,AG	V
15	MOZAMBIQUE	Bazaruto	Inhambane	Bazaruto	2130S 3522E	0	150	40	Dune forest, swamp forest, Coastal <i>Brachystegia</i> , <i>Mimosops caffra</i>	NP	Endemism	,AG, L, C&FW	L
16	MOZAMBIQUE	Inhaca Island Dune Forest	Maputo	Maputo	2600S 3259E	10 - 40	9	9	Dune forest	Terrestrial Reserve		OP,AG, FW	V
17	Moz	Mossuril Complex	Nampula	Mossuril	1455S 4025E		1200	?	coastal <i>Brachystegia</i> forest, <i>coastal mosaic</i>	no	Endemism	Ag, F	V
18	Moz	Gile	Zambezia	Gile	1610S 3830E	200-500	2100km2	2100km2	coastal <i>Brachystegia</i> forest and <i>Umbila</i> *elephants, <i>buffalo</i> , <i>lions</i> ,	Reserve			H

No.	Country	Forest Name	Province/region	District	Grid Location	Altitude (m)	Quoted Area	Min Forest Area	Vegetation Type	Status	Endemism	Type of threats	Level of Threat
									<i>leopard, eland and other anelops.</i>				
19	Moz	Maganja da Costa	Zambezia	Maganja	1720S 3740E	100-200	600km2		Coastal dry forest, <i>umbila</i>	Free Area but proposed for consession.	Endemism		H
20	Moz	Moribana	Manica	Susundega	1915S 3340E	650	50km2	50km2	Afromontane transition, riverine forest	protected	Endemism		L
21	Moz	Pomene	Inhambane	Massinga	2255S 3535E	50	200km2	?	Coastal Scrub forest	Game Reserve		F, IH	H
22	Moz	Mucheve	Sofala	Buzi	2035S 3350E	100	?	?	<i>Brachystegia, Fernandoa, Pau Rosa, Pau Preto, Monzo.</i>	protected but abundant			L
23	Moz	Chirindzeni	Gaza	Xai-Xai	2520S 3321E	50	?	?	Coastal Scrub forest	Sacred forest & CMA		none	N
24	Moz	Matutuine	Maputo	Matutuine	2620S 3220E	50	23.6 km2	?	Sand dunes, Swamp forest, Albizia	partly protected	Endemism	AG, FW,L,F	V
25	Moz	Maputo TFCA	Maputo	Matutuine	2625S 3220E	50	700km2	?	Swamp forest, Dry forest	protected	Endemism	AG	H
26	Moz	Bobole	Maputo	Marracuene	2535S 3240E	50-100	13km2	2	<i>Raphia australis</i>	protected		AG,L,C,F,FW	V
27	Moz	Inharrime	Inhambane	Inharrime	2430S 3455E	100		?	Scrub forest	no		AG,L,FW	?
28	Moz	Macomia-Quiterajo	Cabo Delgado	Macomia	1145S 4020E	10-300	600	300	Mosaic-thicket on sands and forest	part in proposed Nat'l park	Endemism	F, IH	L
29	Moz	Macomia-Sede	Cabo Delgado	Macomia	1215S	50-300	200	200	dense high	in proposed		L, F	L

No.	Country	Forest Name	Province/region	District	Grid Location	Altitude (m)	Quoted Area	Min Forest Area	Vegetation Type	Status	Endemism	Type of threats	Level of Threat
					4010E				forest	Nat'l park			
30	Moz	Macomia- Mipande Velho	Cabo Delgado	Macomia	1215S 4025E	10-150	200	100	Mosaic-thicket on sands and forest	in proposed Nat'l park	Endemism	L,F	L
31	Moz	Pemba Metuge-Rio Tari Area	Cabo Delgado	Pemba-Metuge	1250S 4025E	20	100	100	thicket on sands ( <i>Guibortia schlebenii</i> )	in proposed Nat'l park	Endemism	C, F	L
32	Moz	Quissanga-Mossemuco Area	Cabo Delgado	Quissanga	1230S 4025E	20	200	100	Mosaic-thicket on sands and forest	in proposed Nat'l park	Endemism	IH	H
33	Moz	Memba- Tacuane Complex	Cabo Delgado	Chiure	1325S 4010E	100	200	40	coastal <i>Brachystegia</i> forest	community management area		AG	H
34	Moz	Mecufi- Baia do Lurio	Cabo Delgado	Mecufi	1330S 4025E	10	40	3	dune forest	community management area	Endemism	AG, F, C	V
35	Moz	Quissanga- Pemba Metuge frontier, west of main road	Cabo Delgado	Quissanga	1250S 4015E	100	250	250	dense high forest, woodland	in proposed Nat'l park		AG, F, C	H
36	Moz	Inselbergs of Meluco	Cabo Delgado	Meluco	1235S 3930E	100-500m	1500	150	mosaic at foot of inselbergs	in proposed Nat'l park	Endemism	AG, F	H
37	Moz	Quipaco	Cabo Delgado	Quissanga	1145S 4025E	10	0.24	0.18	thicket on calcareous substrate	in proposed Nat'l park	Endemism		L
38	Moz	Quisiwe	Cabo Delgado	Quissanga	1237S 4026E	10	10	5	thicket on calcareous substrate	in proposed Nat'l park	Endemism		H
39	Moz	Mefundvo	Cabo Delgado	Quissanga	1235S 4025E	10	20	10	thicket on calcareous substrate	in proposed Nat'l park	Endemism		H

No.	Country	Forest Name	Province/region	District	Grid Location	Altitude (m)	Quoted Area	Min Forest Area	Vegetation Type	Status	Endemism	Type of threats	Level of Threat
40	Moz	Quilalea	Cabo Delgado	Ibo	1230S 4034E	10	0.35	0.25	thicket on calcareous substrate	in proposed Nat'l park	Endemism		N
41	Moz	Sencar	Cabo Delgado	Ibo	1230S 4036E	10	78	50	thicket on calcareous substrate	in proposed Nat'l park	Endemism		N
42	Moz	Rolas	Cabo Delgado	Macomia	1215S 4035E	10	0.07	0.04	thicket on calcareous substrate	in proposed Nat'l park	Endemism		N
43	Moz	Vamisi	Cabo Delgado	Palma	1040S 4035E	10	20	10	thicket on calcareous substrate	no	Endemism		H
44	Moz	Metundo	Cabo Delgado	Mocimboa da Praia	1110S 4020E	10	20	10	thicket on calcareous substrate	no	Endemism		L
45	Moz	Quifuqui	Cabo Delgado	Mocimboa da Praia	1115S 4025E	10	10	5	thicket on calcareous substrate	no	Endemism		L
46	MOZ	Sanga	Niassa	Sanga						no		L, F, IH	
47	MOZ	Mandimba	Niassa	Mandimba						no		L, AG, F	
48	Moz	Memo	Gaza	Manjacaze					Androstachys johnsonii dry forest	no		AG,L,F,FW,CL	
48	MOZ	Palma	Cabo Delgado	Palma					Mosaic , high dense forest	none		F, AF, IH	
50	MOZ	Mabalane	Gaza	Mabalane Chicualacuala					Androstachys johnsonii dry forest	no		AG,L,F,FW,CL	
51	MOZ	Funhalouro	Inhambane	Funhalouro					Androstachys johnsonii dry forest	no		s	L